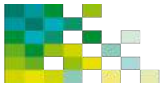


ANEXOS A LA SOLICITUD DE DEPÓSITO DE LA LÍNEA  
CELULAR **RP2\_FiPS4F2.2** EN EL BANCO NACIONAL DE  
LÍNEAS CELULARES.



Anexo 1. Test de pluripotencia

Annex 1. Pluripotency test

Anexo 2. Test de diferenciació *in vitro*

Annex 2. *In vitro* differentiation test

Anexo 3. Cariotipo

Annex 3. Karyotype

Anexo 4. Huella genética

Annex 4. DNA fingerprinting

Anexo 5. Genotipo

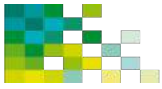
Annex 5. Genotype

Anexo 6. Test de micoplasma

Annex 6. Mycoplasma test

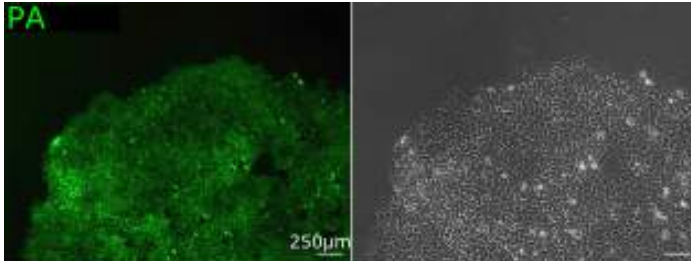
Anexo 7. Test de silenciament

Annex 7. Silencing Test



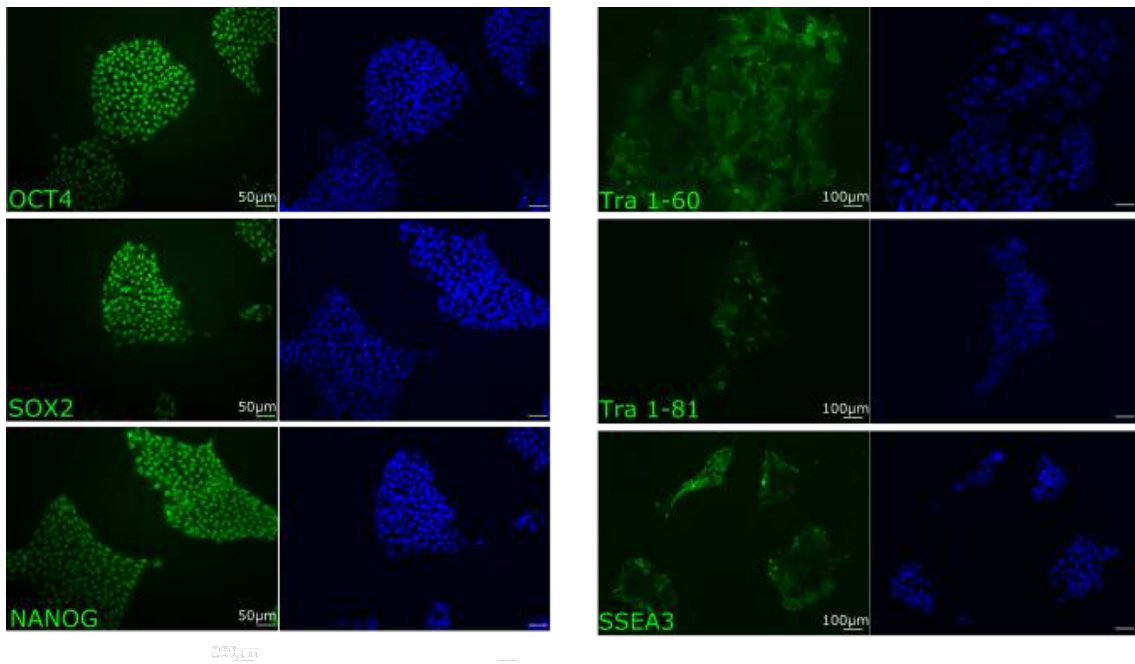
## Anexo 1. Test de pluripotencia

### Annex 1. Pluripotency test



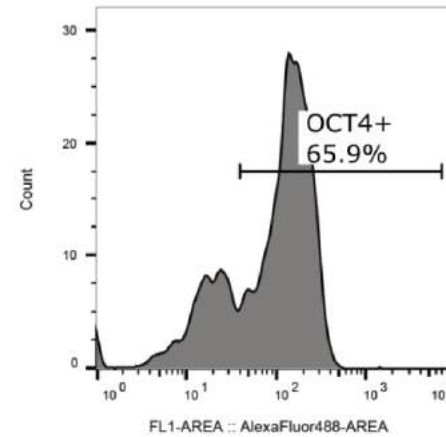
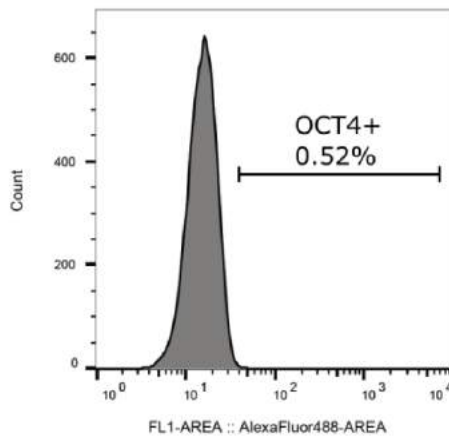
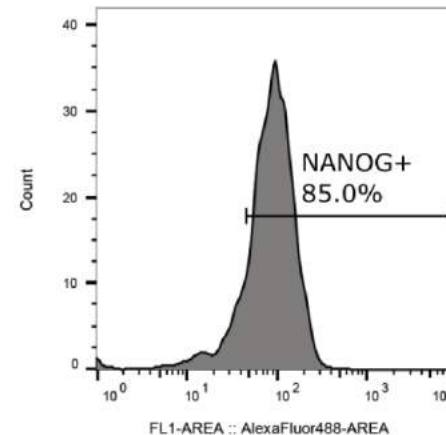
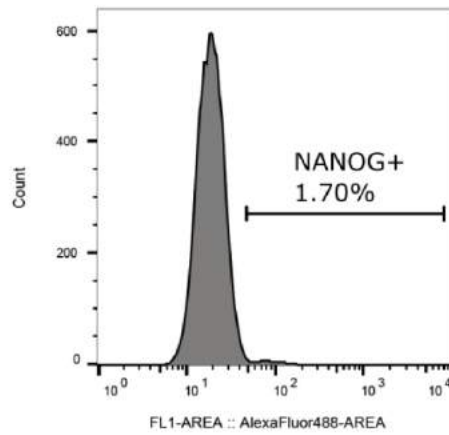
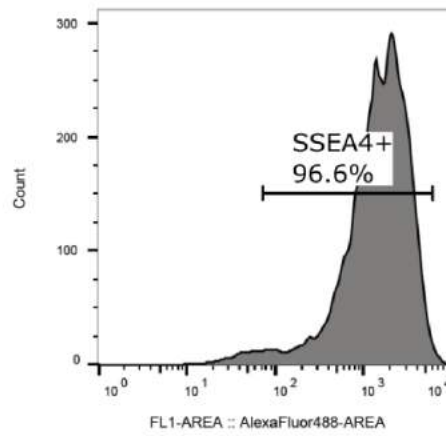
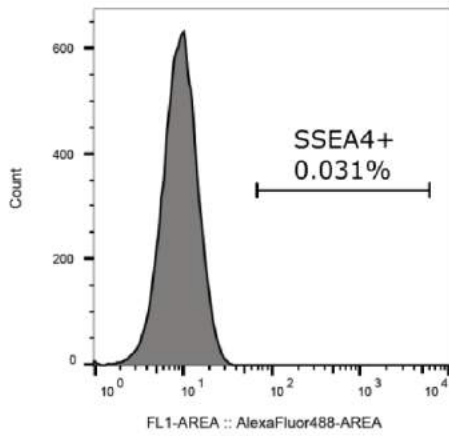
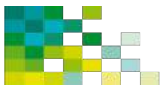
Test de fosfatasa alcalina en la línea RP2\_FiPS4F2.2

Alkaline phosphatase test in RP2\_FiPS4F2.2 cell line



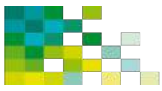
Detección por inmunofluorescencia de los marcadores OCT4, SOX2, NANOG, Tra 1-60, Tra 1-80 y SSEA3 en la línea RP2\_FiPS4F2.2

Immunofluorescence detection of OCT4, SOX2, NANOG, Tra 1-60, Tra 1-81 and SSEA3 in RP2\_FiPS4F2.2 cell line



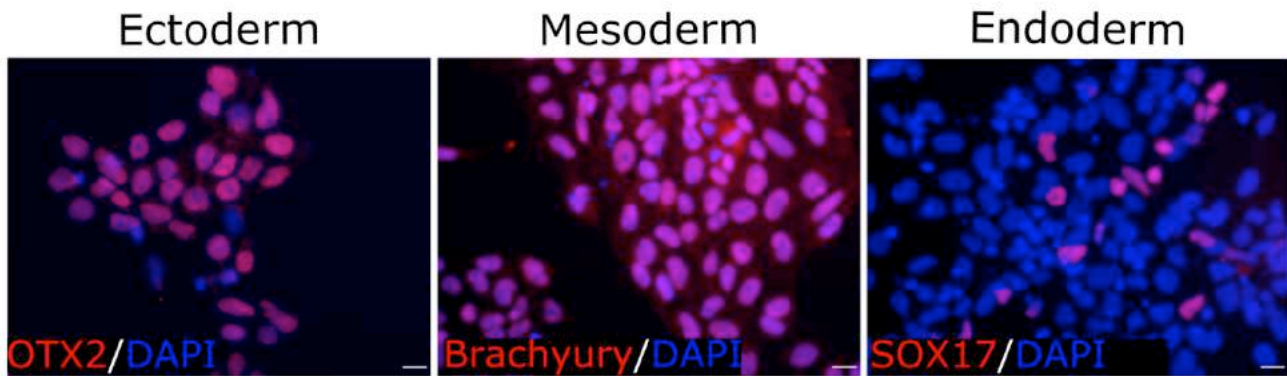
Detecció per citometria de flux de los marcadors SSEA4, NANOG y OCT4 en la línia RP2\_FiPS4F2.2

Flow cytometry detection of SSEA4, NANOG and OCT4 in RP2\_FiPS4F2.2 cell line



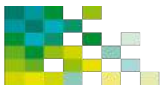
Anexo 2. Test de diferenciació *in vitro*

Annex 2. *In vitro* differentiation test



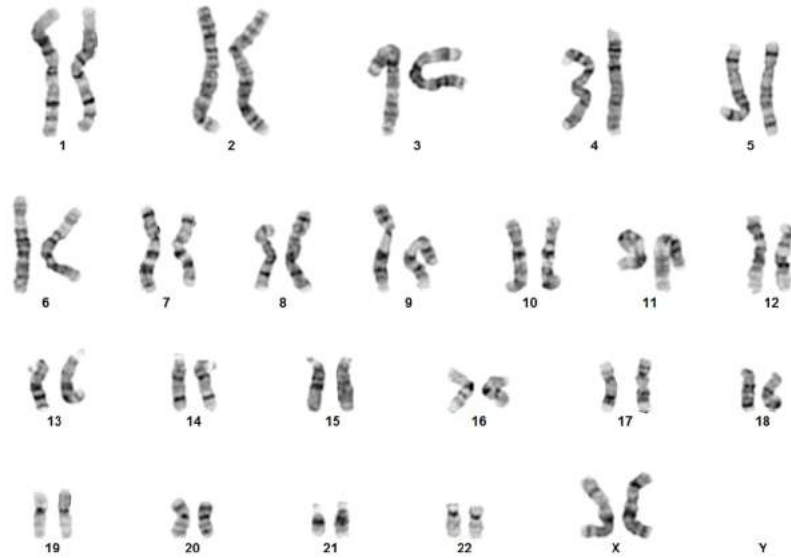
Diferenciació *in vitro* a ectodermo, mesodermo y endodermo de la línia RP2\_FiPS4F2.2

*In vitro* differentiation into ectoderm, mesoderm and endoderm of RP2\_FiPS4F2.2 line

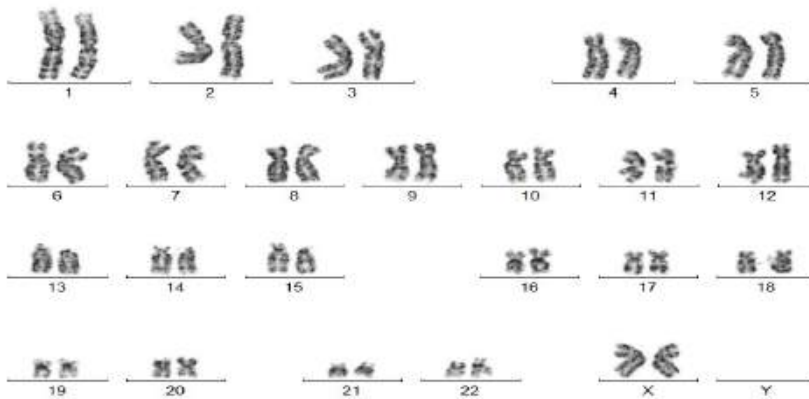


Anexo 3. Cariotipo

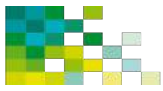
Annex 3. Karyotype



46, XX p5



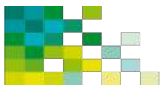
46, XX, p13



Anexo 4. Huella genética

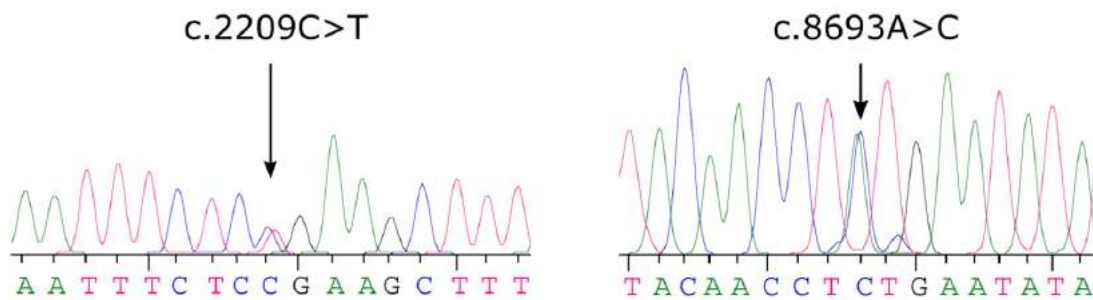
Annex 4. DNA fingerprinting

<b>STR</b>	<b>Fibroblasts</b>	<b>iPSC</b>
AMEL	X	X
vWA	14, 17	14, 17
D8S1179	12, 15	12, 15
TPOX	8	8
FGA	21, 23	21, 23
D3S1358	15, 16	15, 16
THO1	6, 9	6, 9
D21S11	31	31
D18S51	13, 14	13, 14
Penta E	10, 12	10, 12
D5S818	11, 13	11, 13
D13S317	10, 11	10, 11
D7S820	8, 10	8, 10
D16S539	11, 13	11, 13
CSF1PO	10	10
Penta D	2.2, 12	2.2, 12



Anexo 5. Genotipo

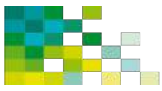
Annex 5. Genotype



Confirmación del diagnóstico genotípico de la línea RP2\_FiPS4F2.2 por secuenciación Sanger

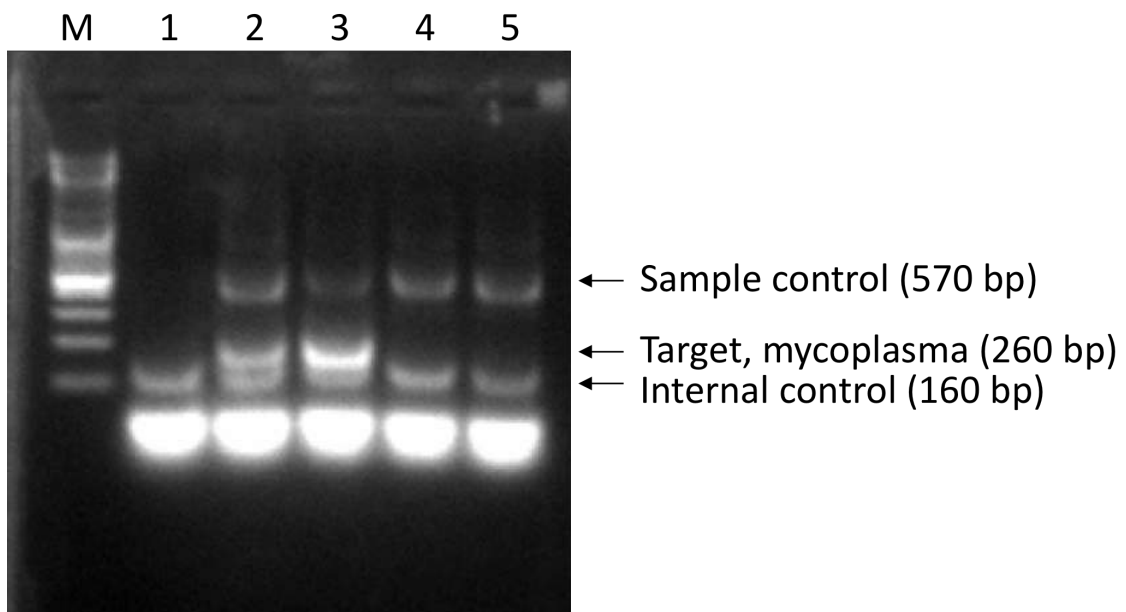
Confirmation of genotypic diagnosis of the line RP2\_FiPS4F2.2 by Sanger sequencing





Anexo 6. Test de micoplasma

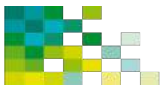
Annex 6. Mycoplasma test



1: negative control

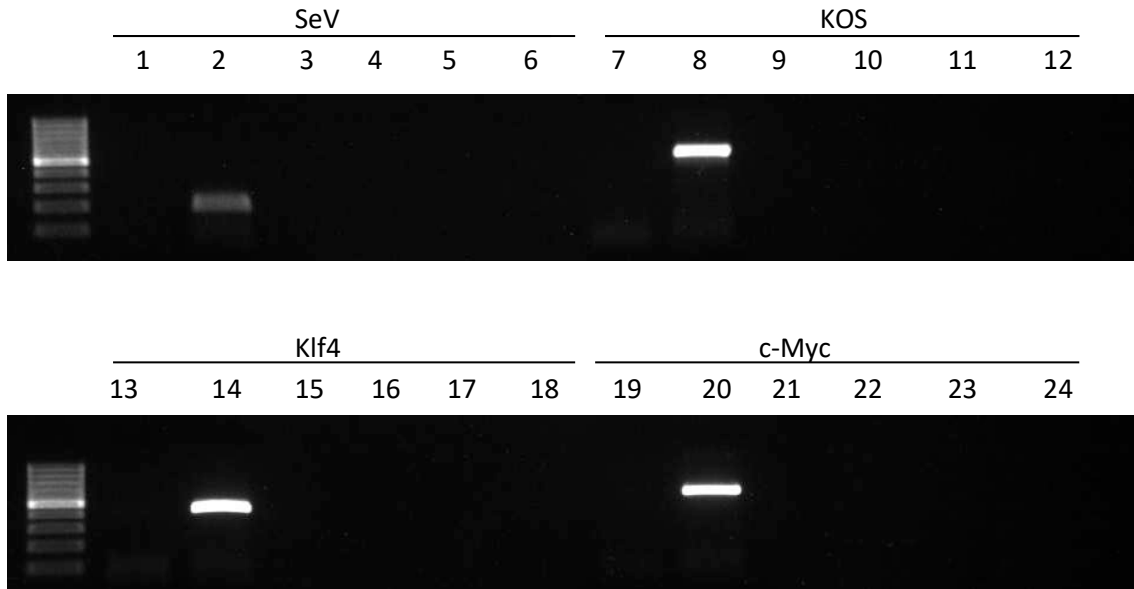
2 and 3: positive control

5: RP2\_FiPS4F2.2 cells



Anexo 7. Test de silenciament

Annex 7. Silencing Test



1, 7, 13 and 19: negative control  
 2, 8, 14 and 20: positive control  
 4, 10, 16 and 22: RP2\_FiPS4F2.2 cells

Detection	Target	Forward/Reverse primer (5'-3')
Sendai virus detection	<i>SeV</i>	GGATCACTAGGTGATATCGAGC ACCAGACAAGAGTTTAAGAGATATGTATC
Transgene detection	<i>KOS</i>	ATGCACCGCTACGACGTGAGCGC ACCTTGACAATCCTGATGTGG
Transgene detection	<i>Klf4</i>	TTCCTGCATGCCAGAGGAGCCC AATGTATCGAAGGTGCTCAA
Transgene detection	<i>c-Myc</i>	TAACTGACTAGCAGGCTTGTCG TCCACATACAGTCCTGGATGATGATG