



**cima**

CENTRO DE INVESTIGACIÓN MÉDICA APLICADA  
UNIVERSIDAD DE NAVARRA

## **Annexes iPS line: G15.AO**

Annex 1: Morphology and AP staining.

Annex 2: FACS analysis.

Annex 3: Immunofluorescence analysis.

Annex 4: Exogenous transcription factor silencing.

Annex 5: CGH analysis.

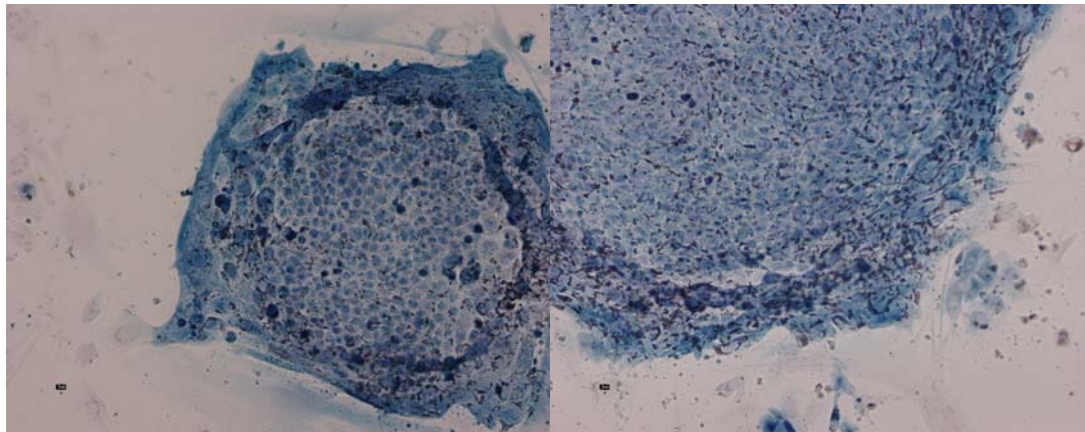
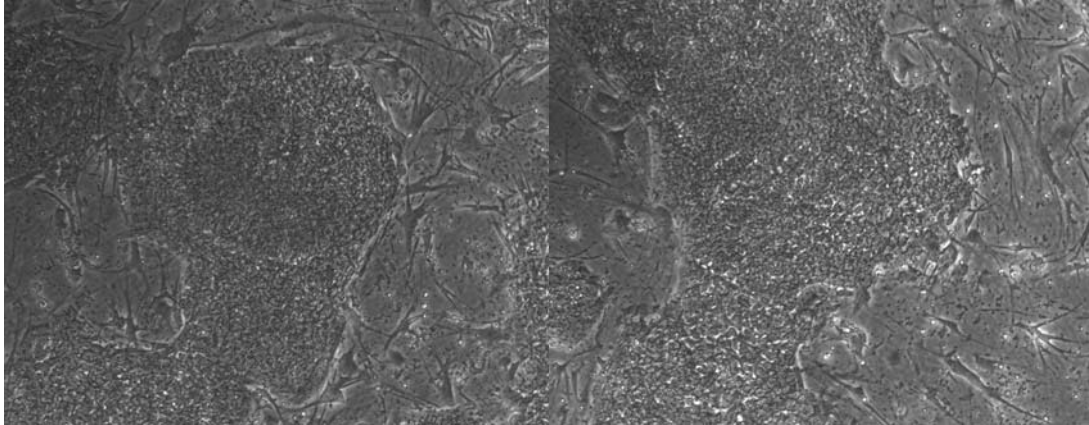
Annex 6: Teratoma.



**cima**

CENTRO DE INVESTIGACIÓN MÉDICA APLICADA  
UNIVERSIDAD DE NAVARRA

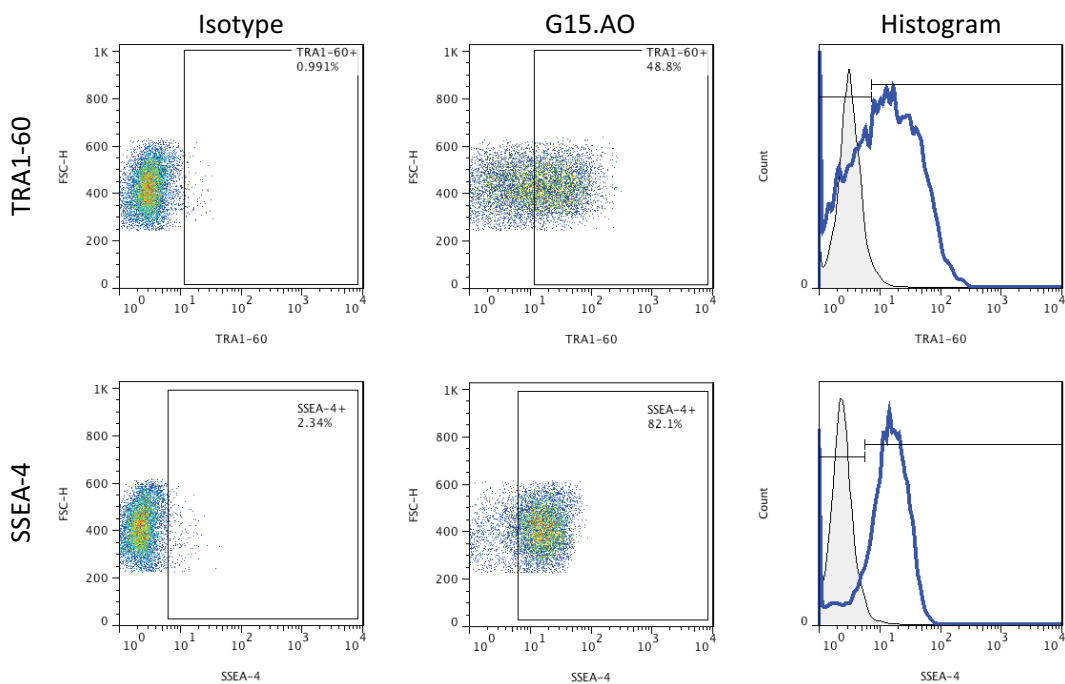
## Annex 1 Morphology and Alkaline phosphatase staining



Passage 15. iPS G15.AO

## Annex 2

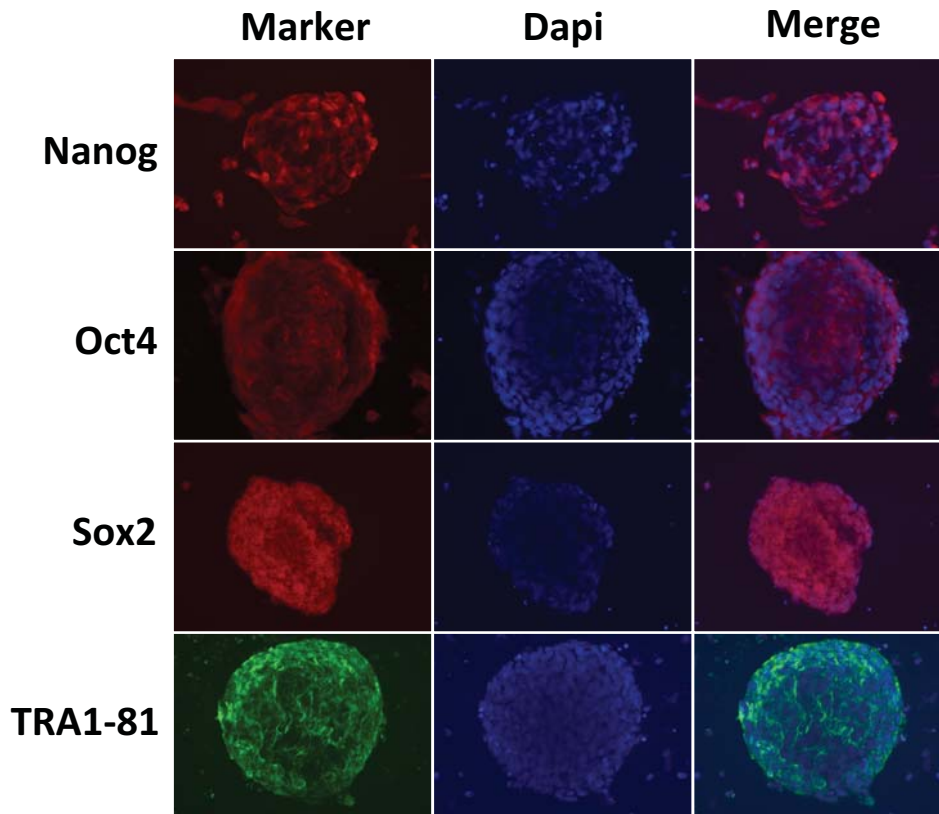
# Expression of pluripotency markers by FACS



Immunofluorescence of pluripotency associated markers TRA1-60 and SSEA-4 in G15.AO iPS at passage 17.

## Annex 3

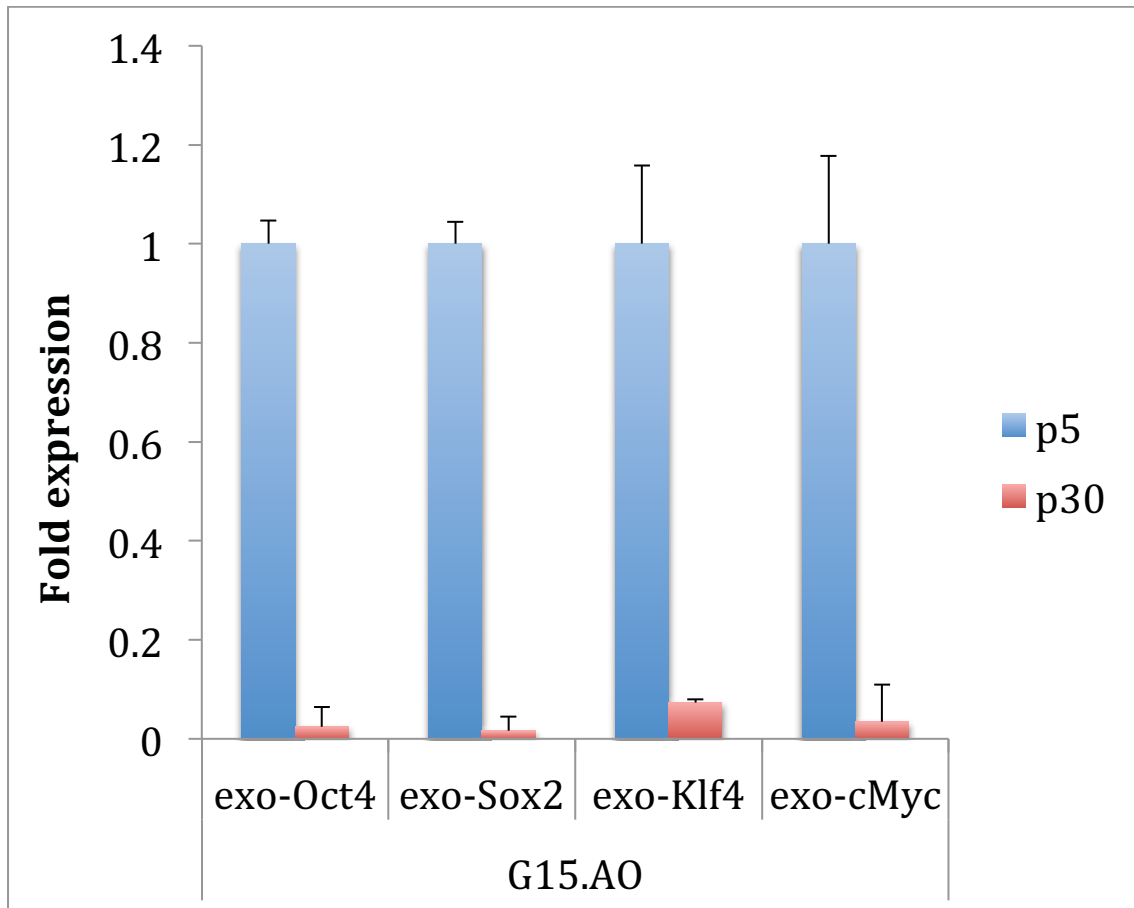
### Expression of pluripotency markers by IF



Immunofluorescence of pluripotency associated markers Nanog, Oct4, Sox2 and TRA1-81 in G15.AO iPS at passage 17.

## Annex 4

### Silencing of exogenous factors



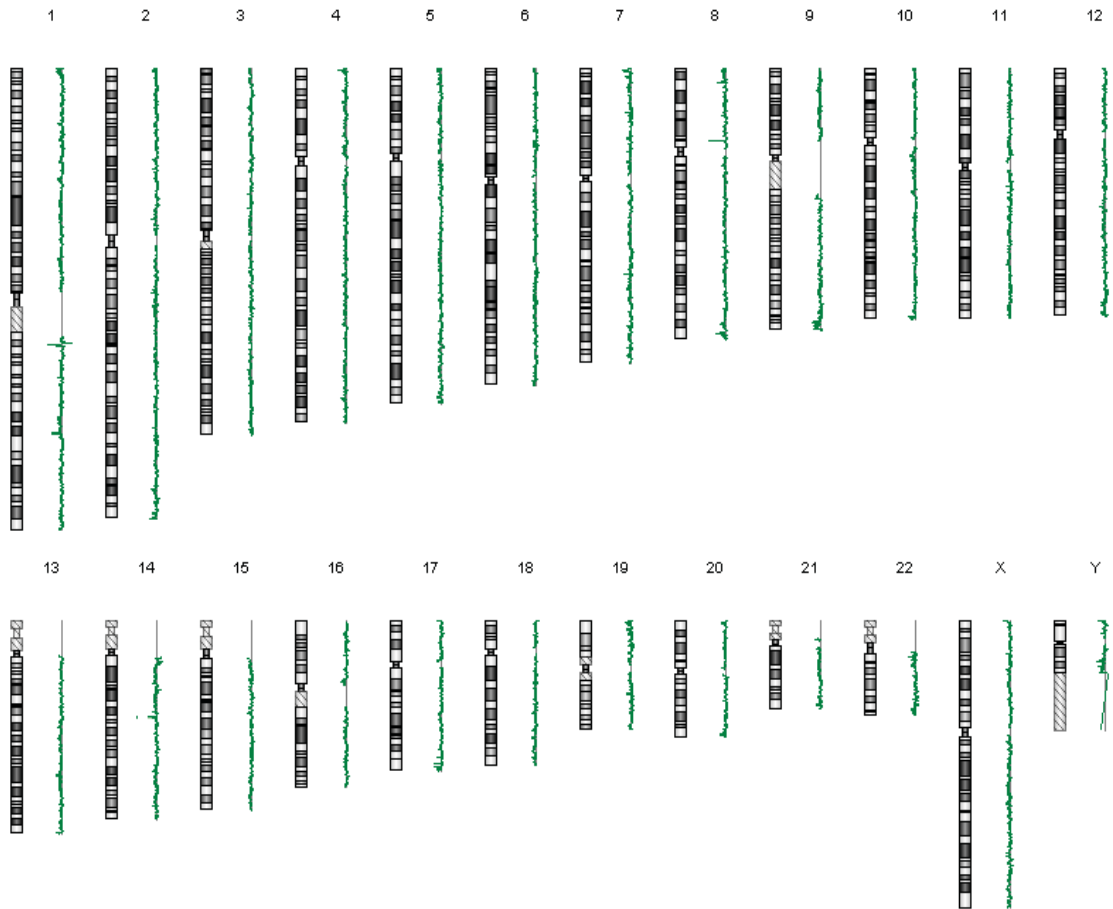
Passage 5 and 30. iPS G15.A0



**cima**

CENTRO DE INVESTIGACIÓN MÉDICA APLICADA  
UNIVERSIDAD DE NAVARRA

## Annex 5 CGH analysis



Passage 25. iPS G15.AO

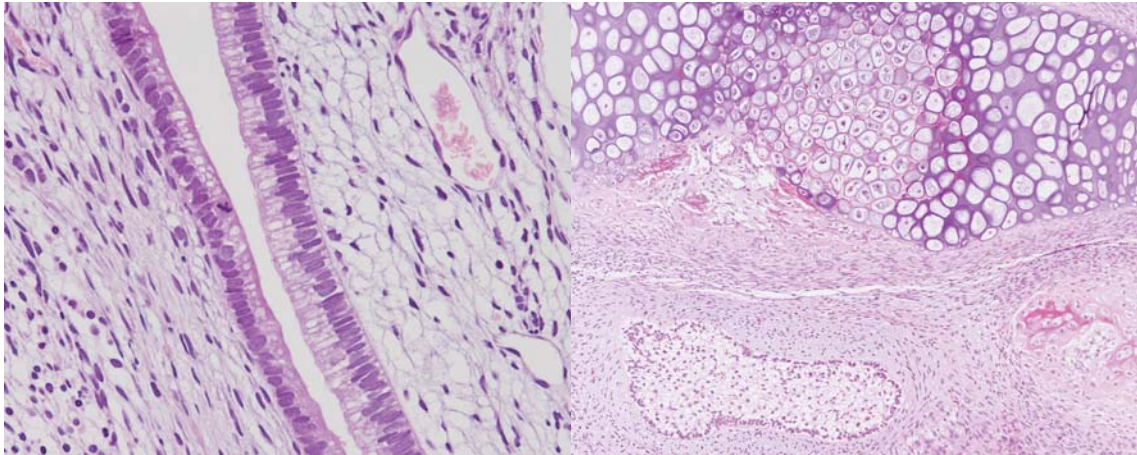


**cima**

CENTRO DE INVESTIGACIÓN MÉDICA APLICADA  
UNIVERSIDAD DE NAVARRA

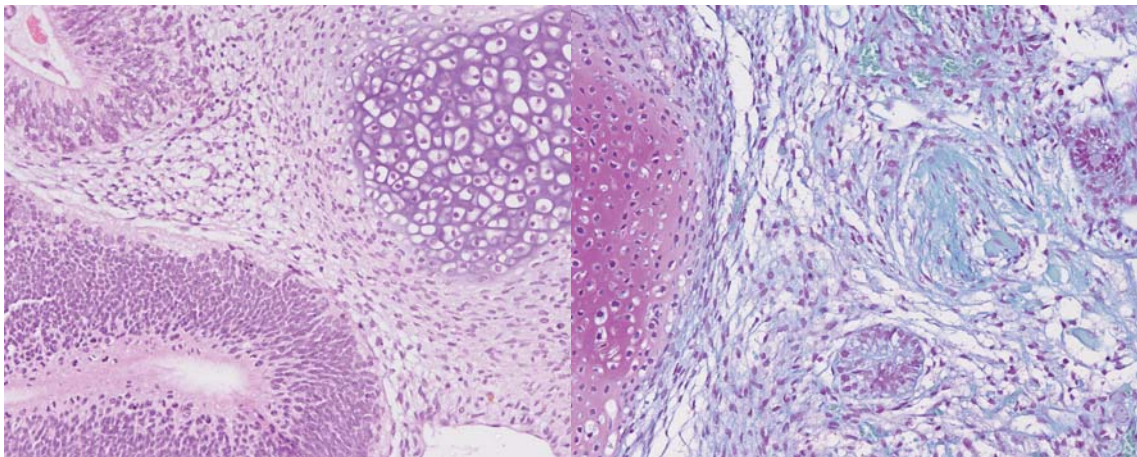
## Annex 6

### In vivo differentiation. Teratoma formation



Izquierda: Tejido epitelial pseudoestratificado semejante al de la traquea. HE. 400x.

Derecha: Tejido cartilaginoso y formaciones epiteliales indiferenciadas. HE. 100x.



Izquierda: Combinación de tejidos glandulares, conjuntivo laxo y cartilaginoso. H. E. X 200.

Derecha: Pieza cartilaginosa con un acino epitelial y pequeñas formaciones de músculo estriado entre el tejido conjuntivo. T. de Gallego. X 200.

Passage 21. iPS G15.AO