



**cima**

CENTRO DE INVESTIGACIÓN MÉDICA APLICADA  
UNIVERSIDAD DE NAVARRA

## **Annexes iPS line: G15.D**

Annex 1: Morphology and AP staining.

Annex 2: FACS analysis.

Annex 3: Immunofluorescence analysis.

Annex 4: Exogenous transcription factor silencing.

Annex 5: CGH analysis.

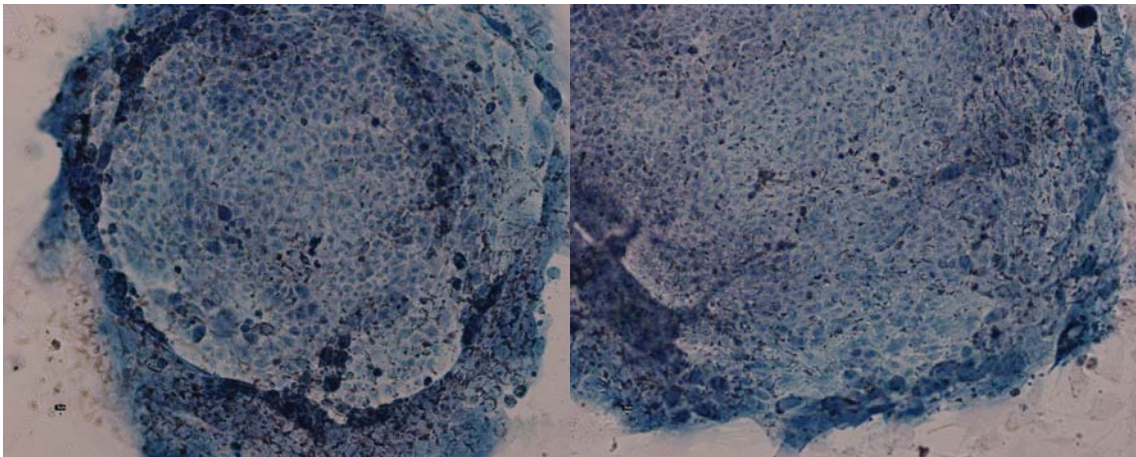
Annex 6: Teratoma.



**cima**

CENTRO DE INVESTIGACIÓN MÉDICA APLICADA  
UNIVERSIDAD DE NAVARRA

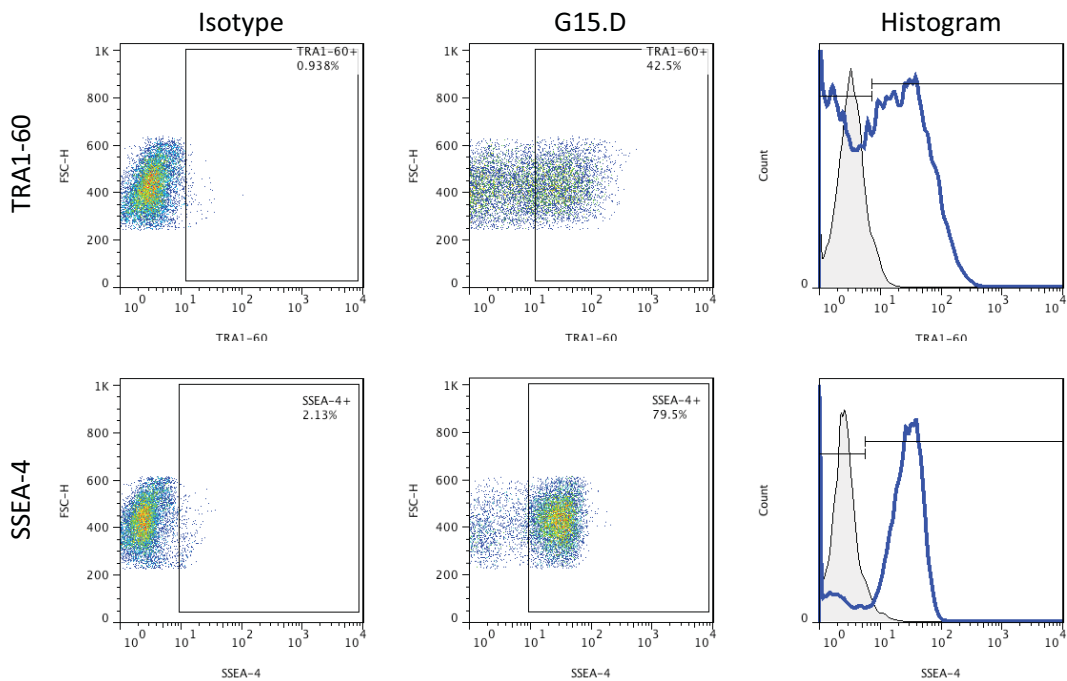
## Annex 1 Morphology and alkaline phosphatase staining



Passage 17. iPS G15.D

## Annex 2

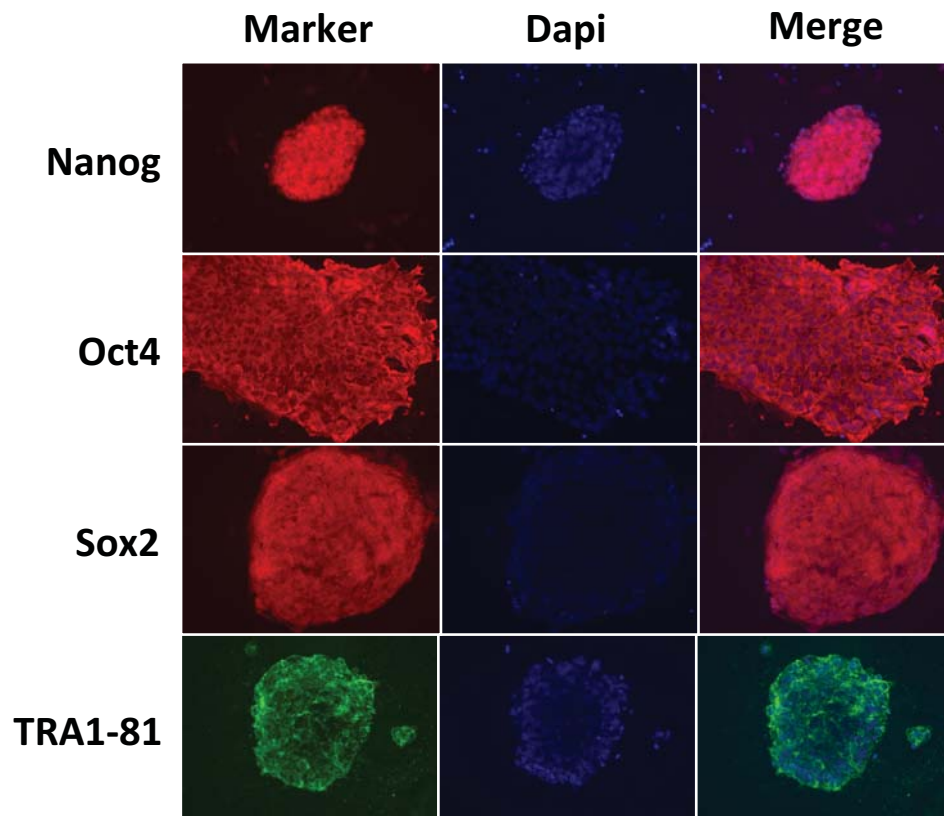
# Expression of pluripotency markers by FACS



Immunofluorescence of pluripotency associated markers TRA1-60 and SSEA-4 in G15.D iPS at passage 19.

## Annex 3

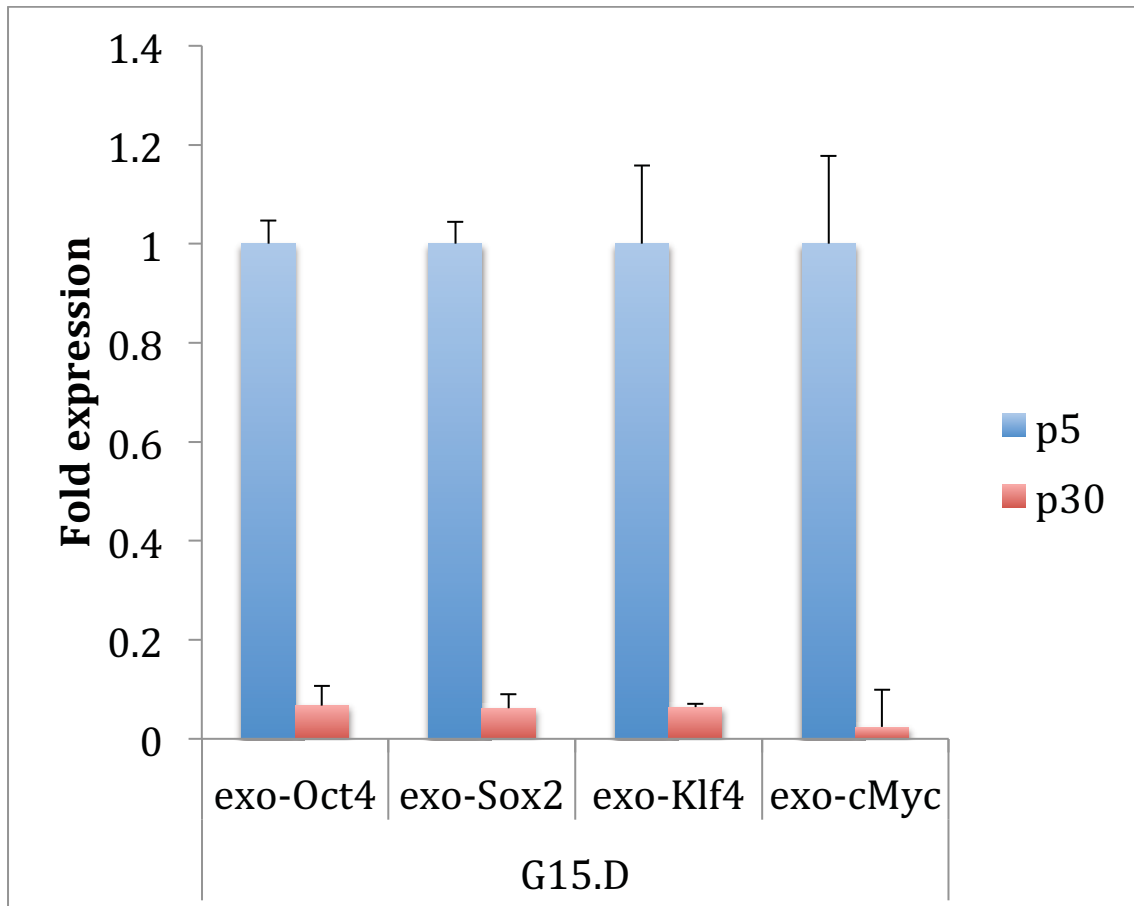
### Expression of pluripotency markers by IF



Immunofluorescence of pluripotency associated markers Nanog, Oct4, Sox2 and TRA1-81 in G15.D iPS at passage 19.

## Annex 4

### Silencing of exogenous factors



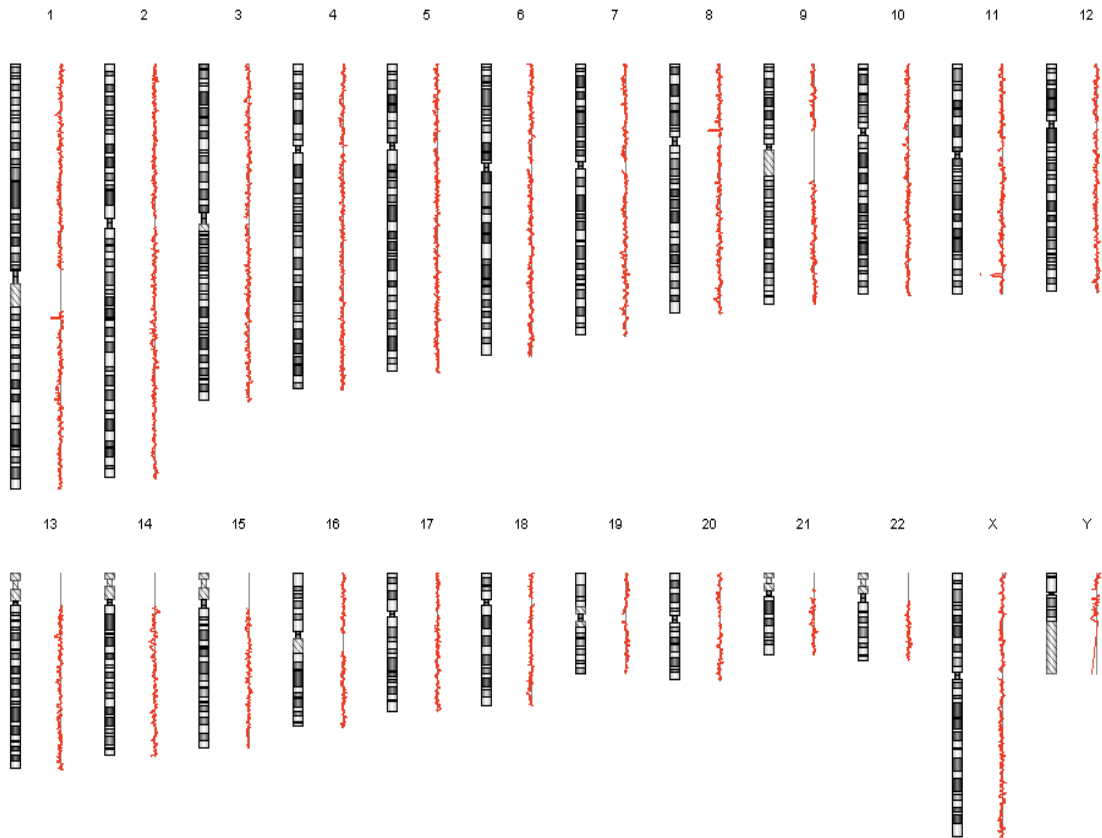
Passage 5 and 30. iPS G15.AD



**cima**

CENTRO DE INVESTIGACIÓN MÉDICA APLICADA  
UNIVERSIDAD DE NAVARRA

## Annex 5 CGH analysis



Passage 26. iPS G15.D



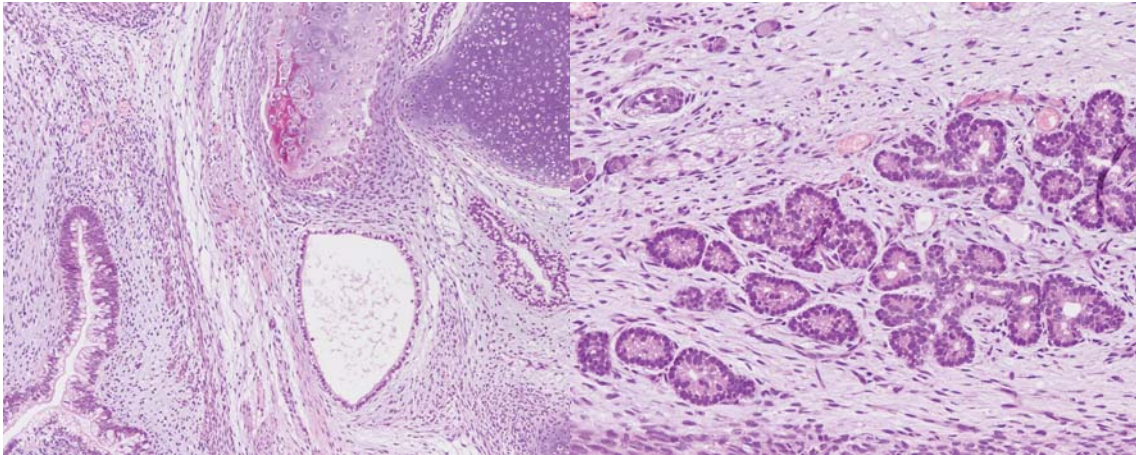


**cima**

CENTRO DE INVESTIGACIÓN MÉDICA APLICADA  
UNIVERSIDAD DE NAVARRA

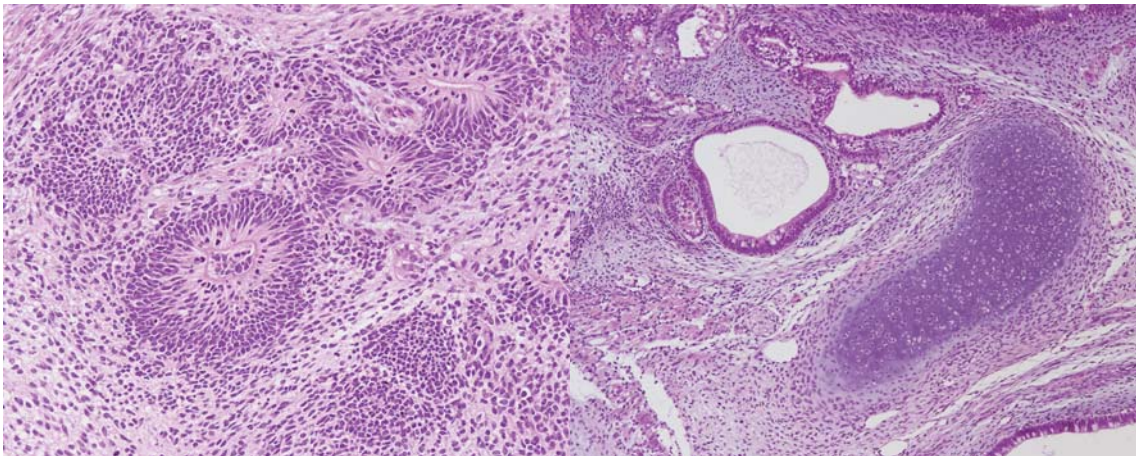
## **Annex 6**

### **In vivo differentiation. Teratoma formation**



Izquierda: Combinación de epitelios tejido conjuntivo, óseo y cartilaginoso. H. E. X 100.

Derecha: Grupo de acinis glandulares de tipo seroso. H. E. X 200.



Izquierda: Formaciones de rosetas neurales. H. E. x 200.

Derecha: Componente mixto con estructuras epiteliales, tejido conjuntivo y cartílago. H. E. X 100.

Passage 23. iPS G15.D