

Figura 1B. Estatus mutacional por PCR específica y secuenciación

SS-PCR Specific Sequence PCR

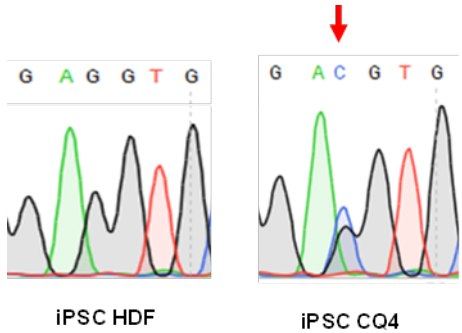
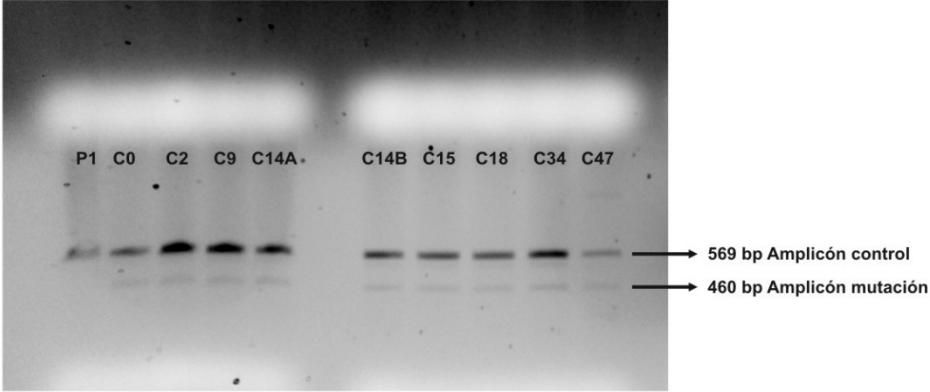


Figura 2. Cariotipo

iPSC CQ4 Genetically corrected

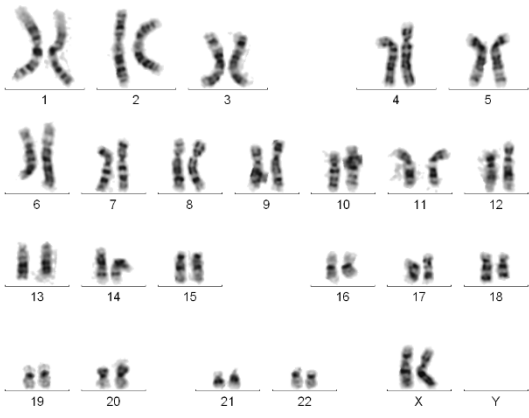


Figura 3. Morfología campo claro

iPSC CQ4 Genetically corrected

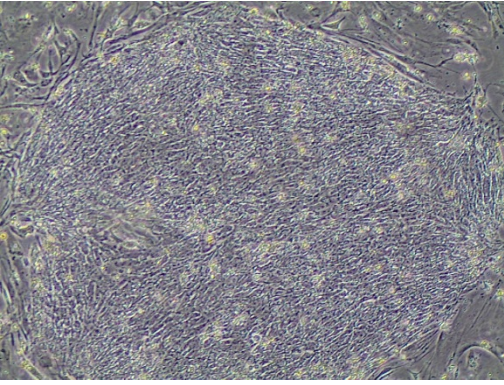


Figura 4. PCR Micoplasma

IPSC C04 Genetically
Corrected
Control N
Control P

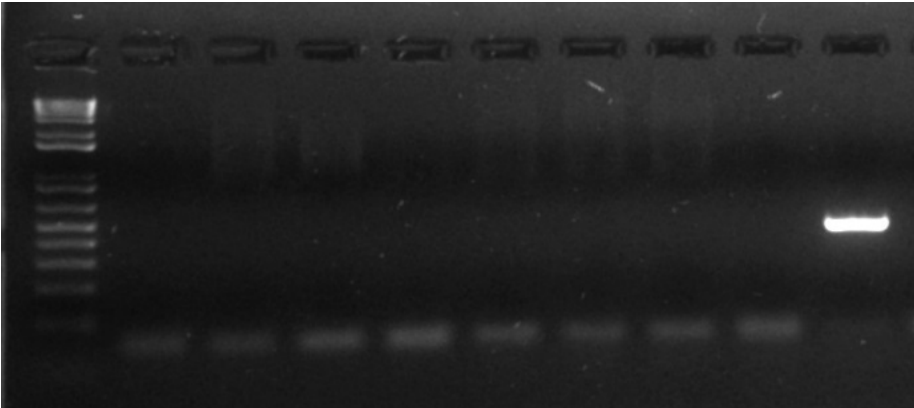
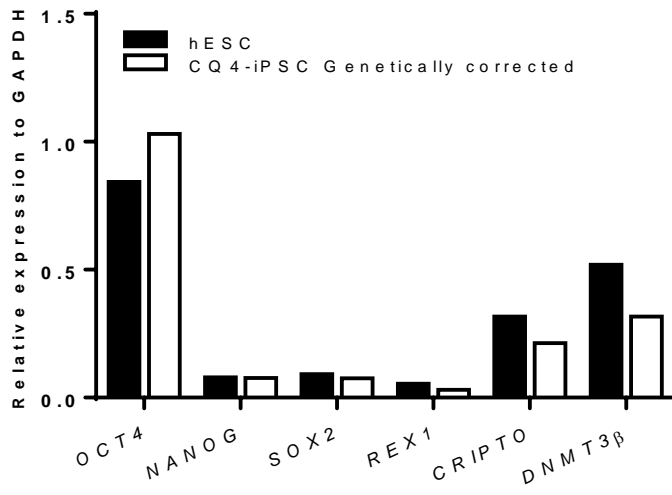
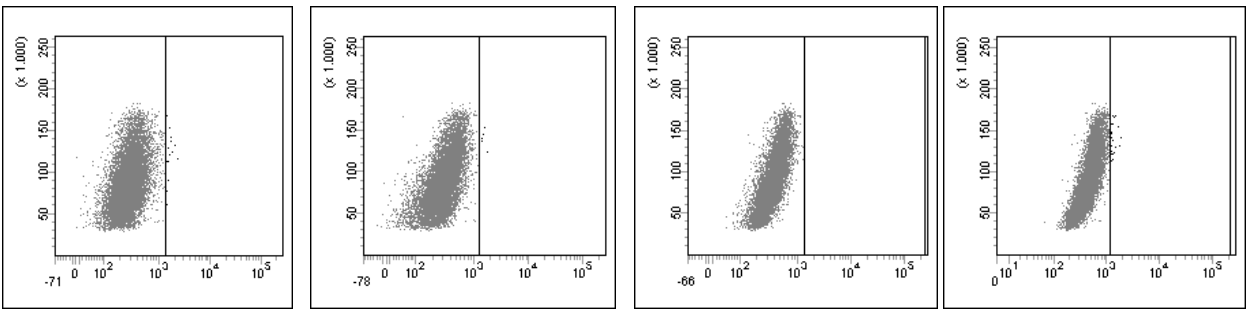


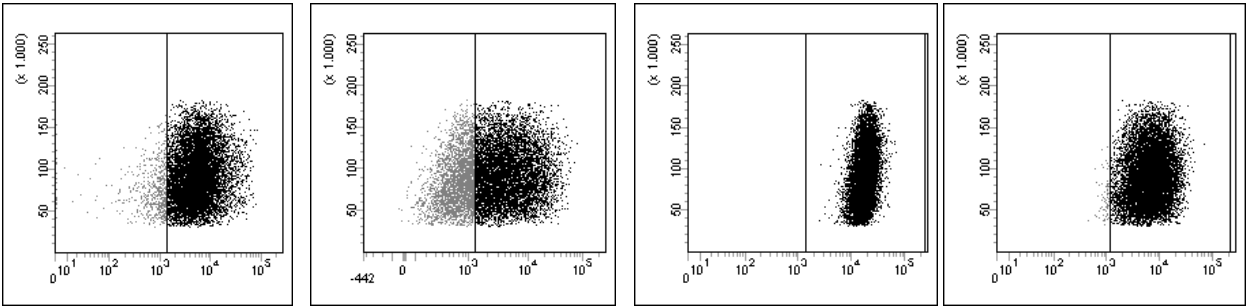
Figura 5. PCR y citometría para marcadores de pluripotencia



Unstained



Stained



SSEA-3

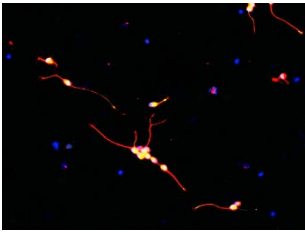
TRA-1-81

SSEA-4

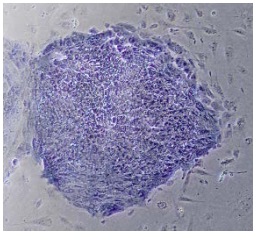
TRA-1-60

Figura 6. Diferenciación *in vitro*

Ectodermo



Endodermo



iPSC CQ4 Genetically corrected

Figura 7. Diferenciación *in vivo* - Teratoma

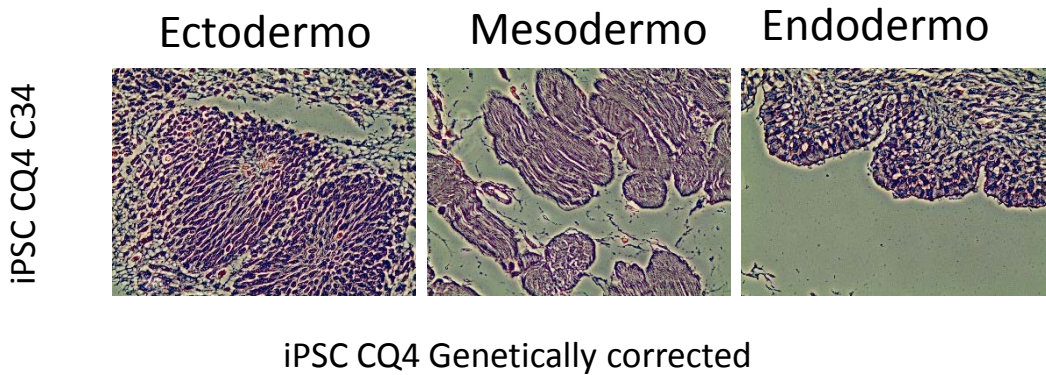


Figura 8. Demetilación de los promotores de Nanog y Oct-4

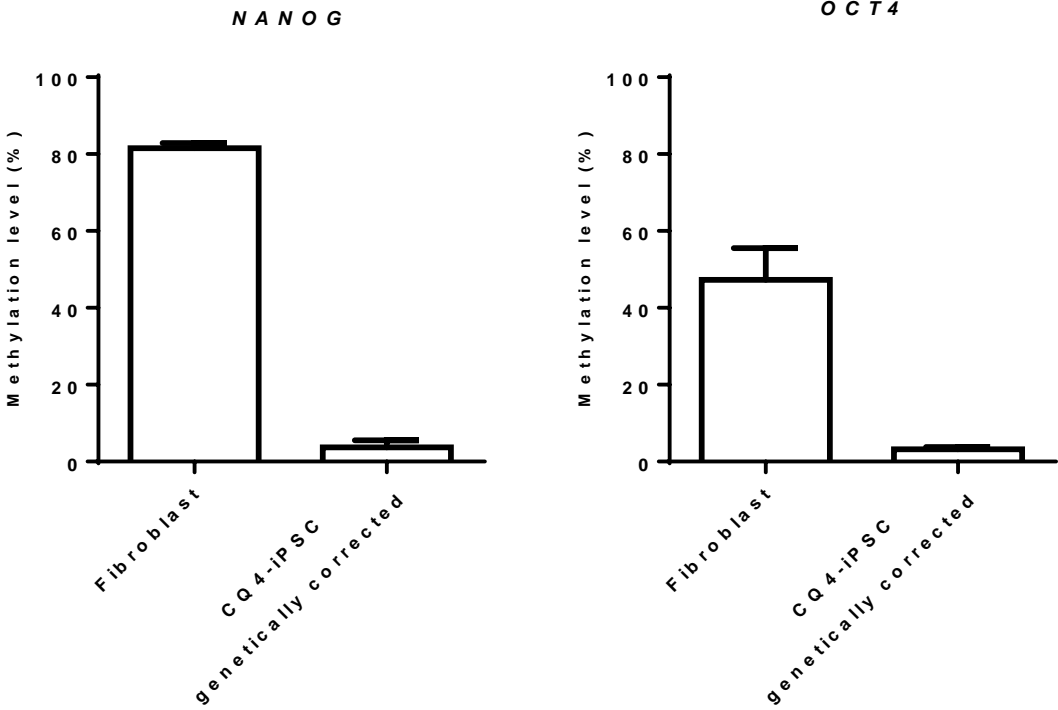
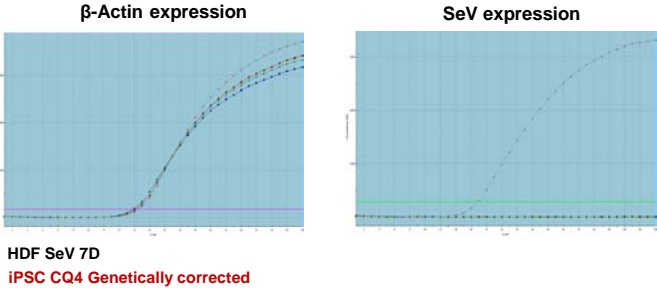
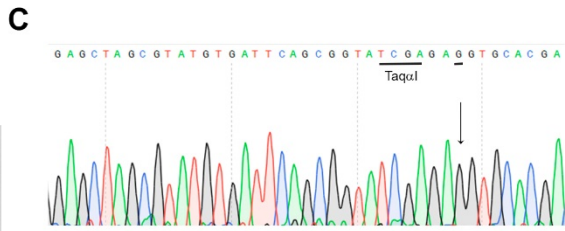
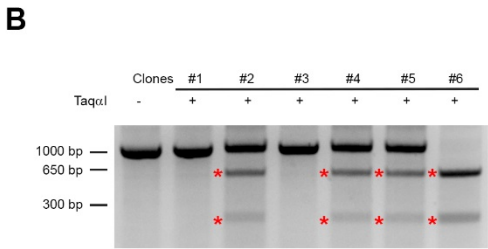
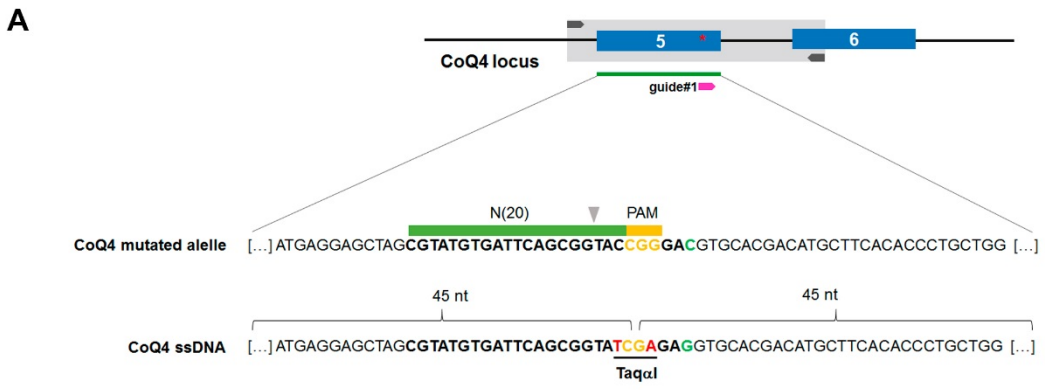


Figura 9. Eliminación del Sendai Virus





D