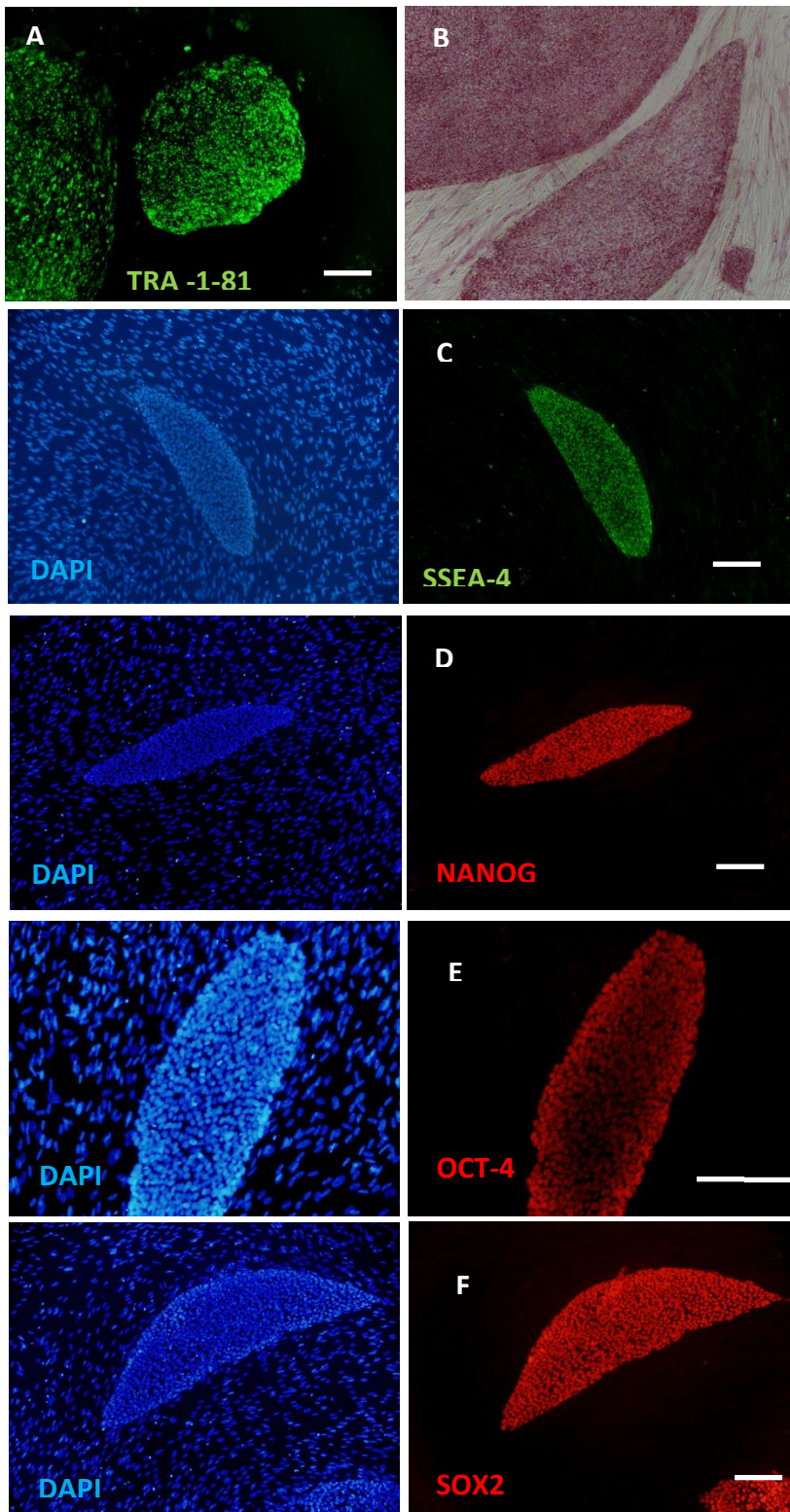


Anexo a la solicitud de depósito de la línea celular

Annexes to the deposited cell line

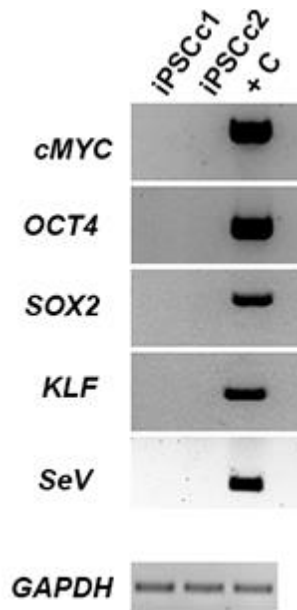
**Ctrl1-FiPS4F1**

Expresión de marcadores de pluripotencia. Expression of pluripotency markers.



A. *In vivo* staining (TRA-1-81) B. Ensayo alcalina fosfatasa. B. Alkaline phosphatase assay. Immunocytochemistry of pluripotency markers (C: SSEA-4 D: NANOG E: OCT-4 F: SOX2). Nuclei are stained with DAPI. Scale bar 200 $\mu$ m.

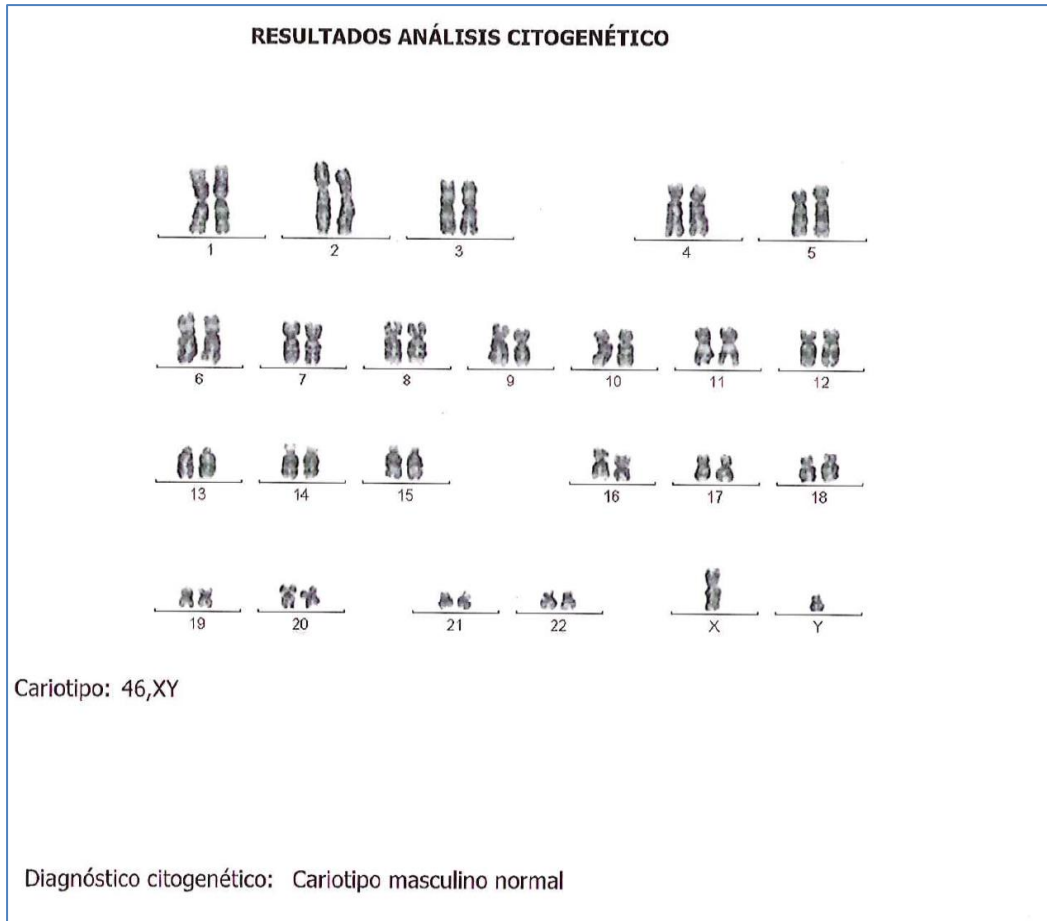
Detección de los transgenes (Klf4, Oct- 4 Sox2, c-Myc) en células reprogramadas mediante virus Sendai. Detection of reprogramming transgenes in cells reprogrammed using Sendai virus.



Expresión de los transgenes del virus SeV en dos líneas de células iPS (RT-PCR) . Las líneas c1 y c2 se analizaron en pases 9 y 10. Los fibroblastos recogidos el día 7 tras la trasducción representan el control positivo.

Expression of viral transgenes in derived iPSC lines by RT-PCR. Two iPSC cell lines, c1 and c2, from the same patient are analyzed at passages 9 -10. The fibroblasts at day 7 after viral transduction are taken as positive control. The conditions for RT-PCR reaction are described by the manufacturer.

Cariotipo de la línea celular **Ctrl1-FiPS4F1** pase 12. **Ctrl1-FiPS4F1** cell line karyotype.



Identificación celular mediante la huella genética por análisis de microsatelites STR de la línea celular / Cell identity: genetic fingerprinting by microsatellite /STR analyses of the  
**Ctrl1-FiPS4F1**

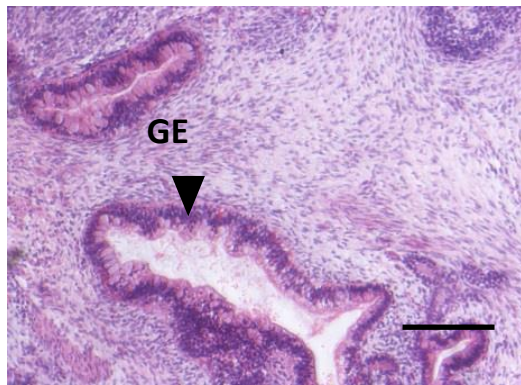
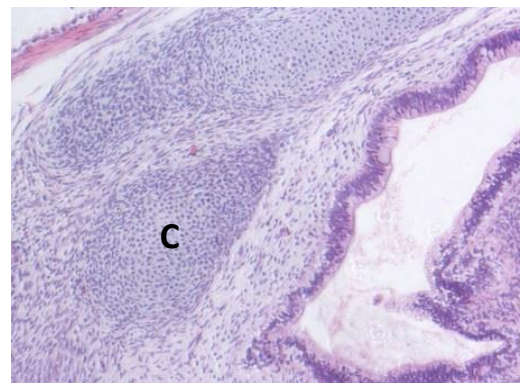
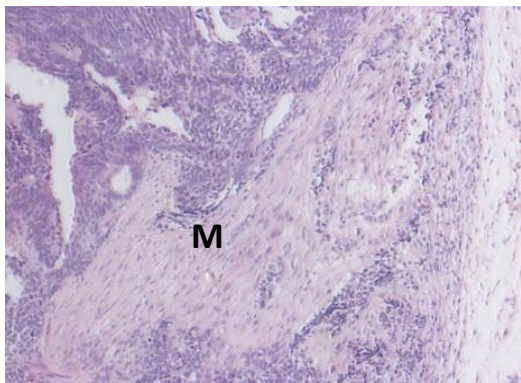
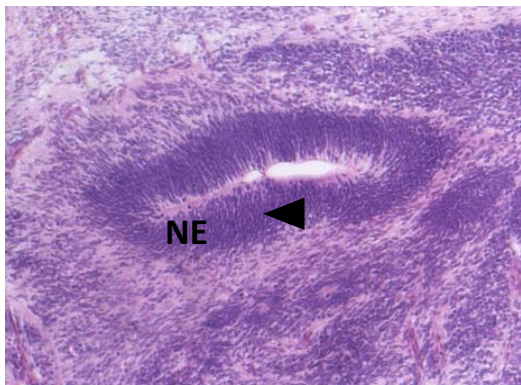
<b>MARKER</b>	<b>STR size Ctrl1-FiPS4F1</b>
D19S572	119/130
D2S2159	170/174
D17S1533	217/217
D14S972	199/203
D8S601	225/225
D9S1853	252/252
D8S1179	165/185
D18S51	289/293
D2S1338	181/193
TH01	254/260
D16S539	155/159
vWA	148/161
D21S11	222/236

Test de *Mycoplasma*/*Mycoplasma* detection

*Mycoplasma* enzymes activity test.

Result: negative.

Ensayo formación teratoma: análisis histológico (tinción Hematoxilina Eosina) / Teratoma formation assay: histological analysis (HE staining)



Ectodermo: retina (R), neuroepitelio (NE). Endodermo: Epitelio de intestino (GE). Mesodermo: Musculo (M), Cartílago (C). Escala 200µm.

Ectoderm: retina (R), neuroepithelium (NE). Endoderm: Gut epithelium (GE). Mesoderm: Muscle (M), Cartilage (C). Scale bar 200 µm.