

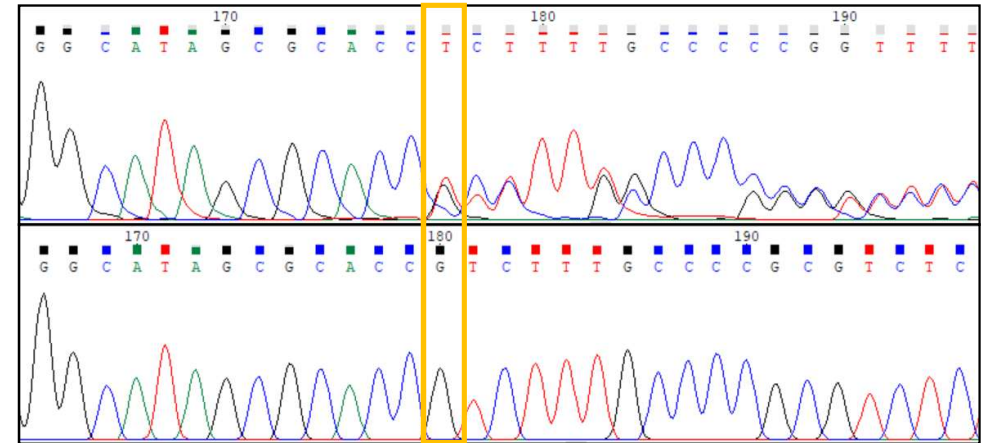
Genotyping STGD73 c8 p8

Allele 1: c.671del

Allele 2: c.5819T>C (A>G in rev)

STGD73 allele 1

WT



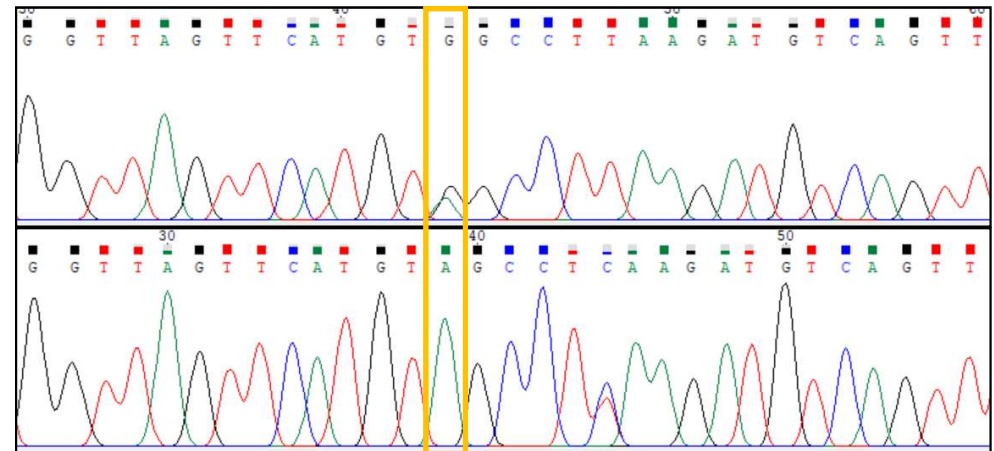
Names:

ESi158-A

STGD73-MiPS4F8

STGD73 allele 2

WT



Annex 1

Fingerprinting STGD73

Sample	D8S1179	D21S11	D7S820	CSP1PO	D3S1358	TH01	D13S317	D16S539	D2S1338	D19S433	vWA
STGD73	14, 16	29, 30	10	10, 13	14, 18	7, 9	11, 14	8, 11	18	13, 15	15, 17
blood stgd73	14, 16	29, 30	10	10, 13	14, 18	7, 9	11, 14	8, 11	18	13, 15	15, 17

Annex 2

STG73 c8 p10

SOX2

NANOG

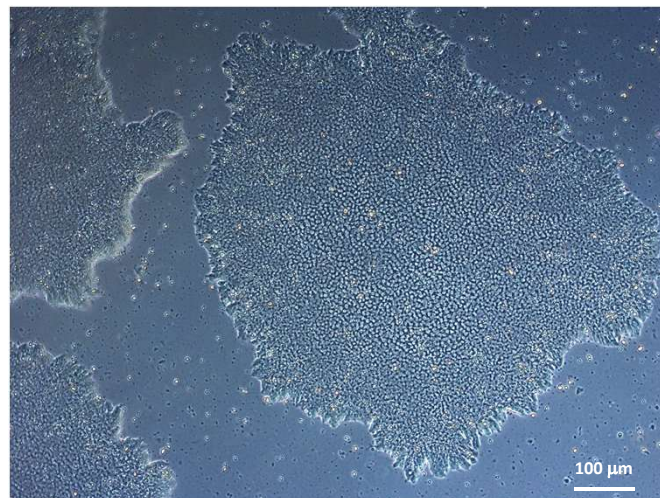
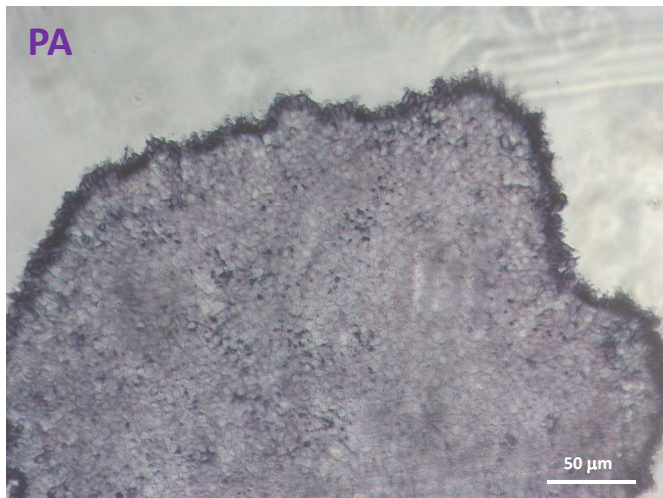
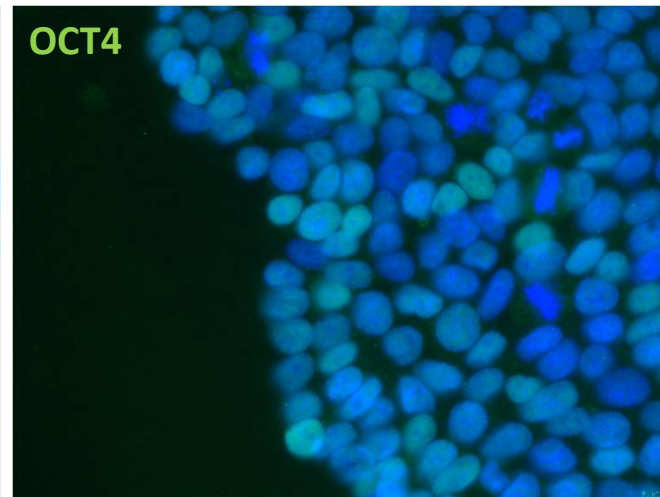
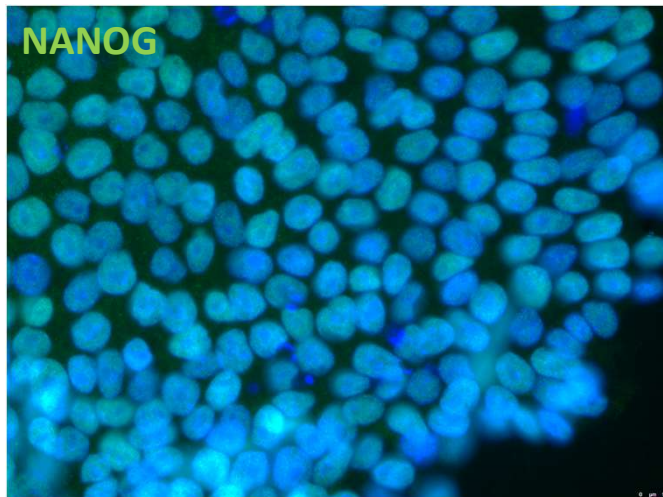
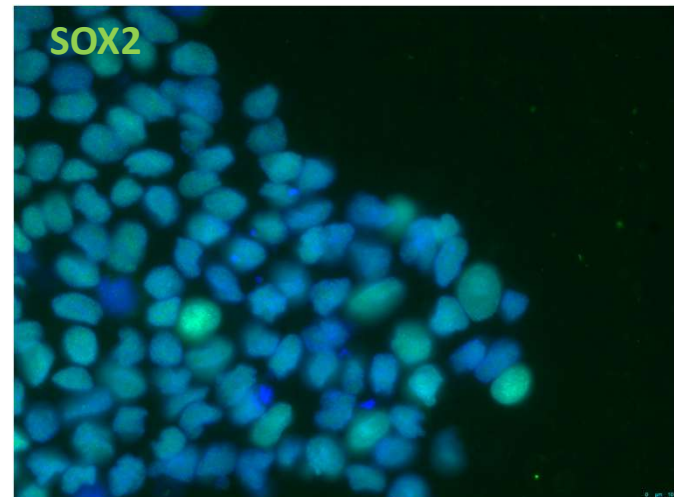
OCT4

PA

Annex 3

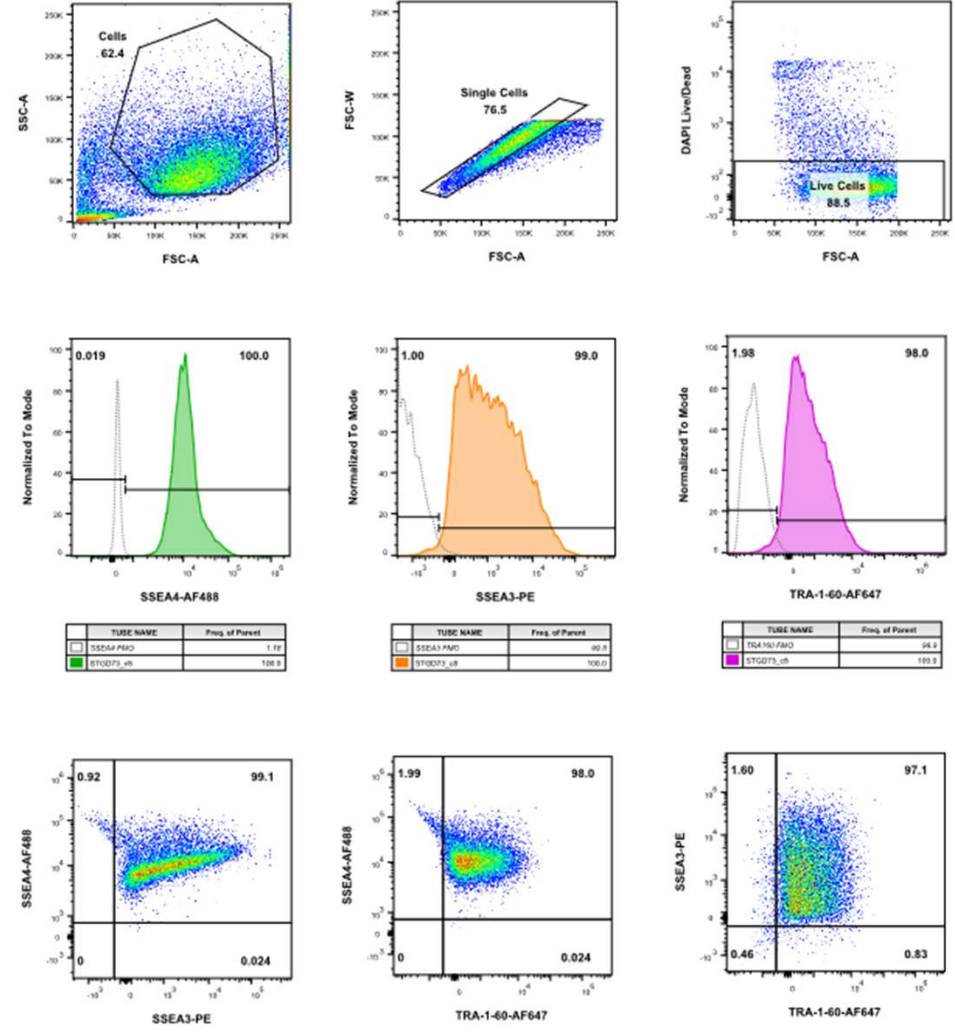
50 μ m

100 μ m



STG73 c8 p10

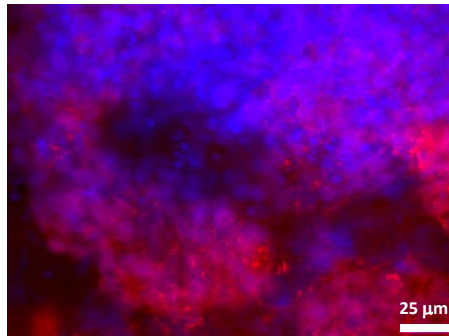
STGD73_c8



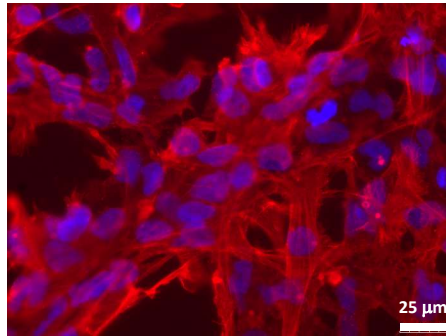
Annex 4

STGD73 c8 p8 3-germ layer differentiation

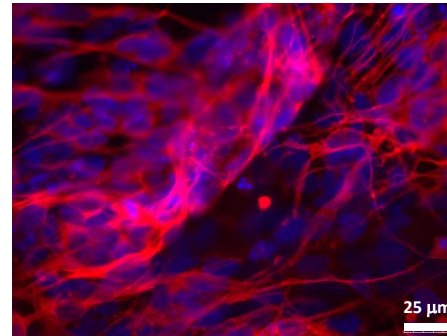
AFP



SMA



TUJ1



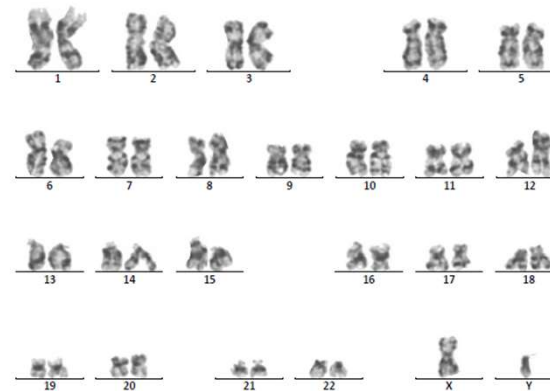
Annex 5

Karyotype STGD73 c8 p12

Código de Biobanco: INVN02524A665CRMA000
Código de origen: STGD 73 C8 P12
Petición de servicio: S2400020

Fecha de entrada: 04/04/24
Tipo de muestra:
Técnica: Bandas G

RESULTADOS ANÁLISIS CITOGENÉTICO

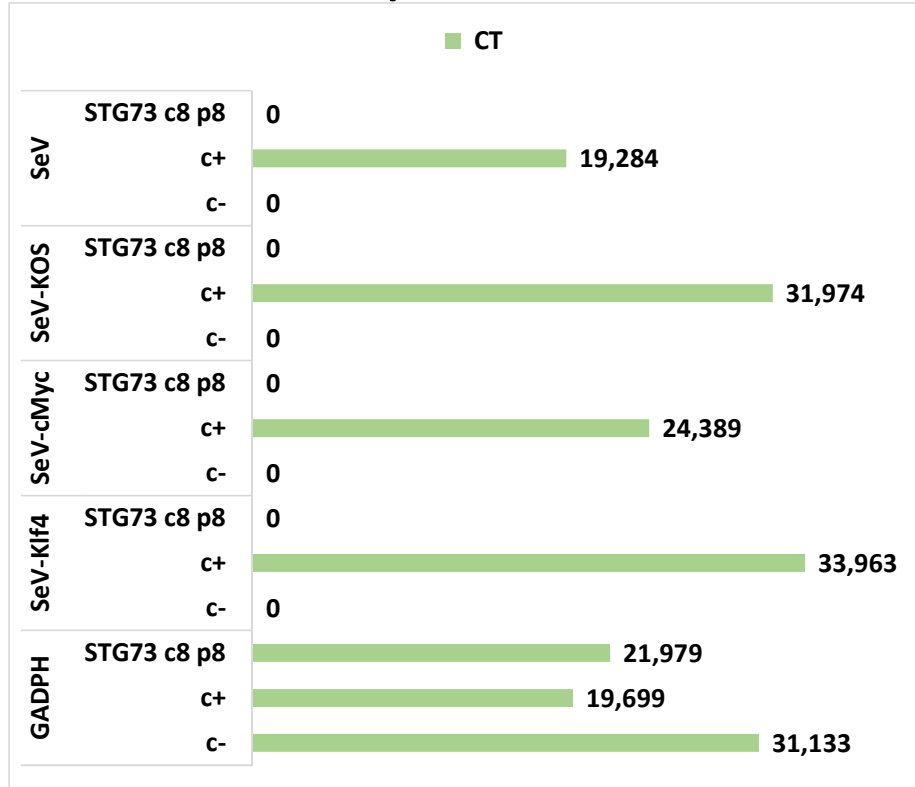


Cariotipo: 46,XY

Annex 6

Diagnóstico citogenético: Línea celular compatible con cariotipo masculino normal.

STG73 c8 p8 SeV clearance



SeV micoplasma control

STGD73 c8 p14

Positive control	blue
Negative control	violet
muestra	violet

MycoGenie Rapid Mycoplasma Detection Kit
Code: MORV0011
tests Code: MORV0011-50