

**Genotyping STGD90c10 p14**

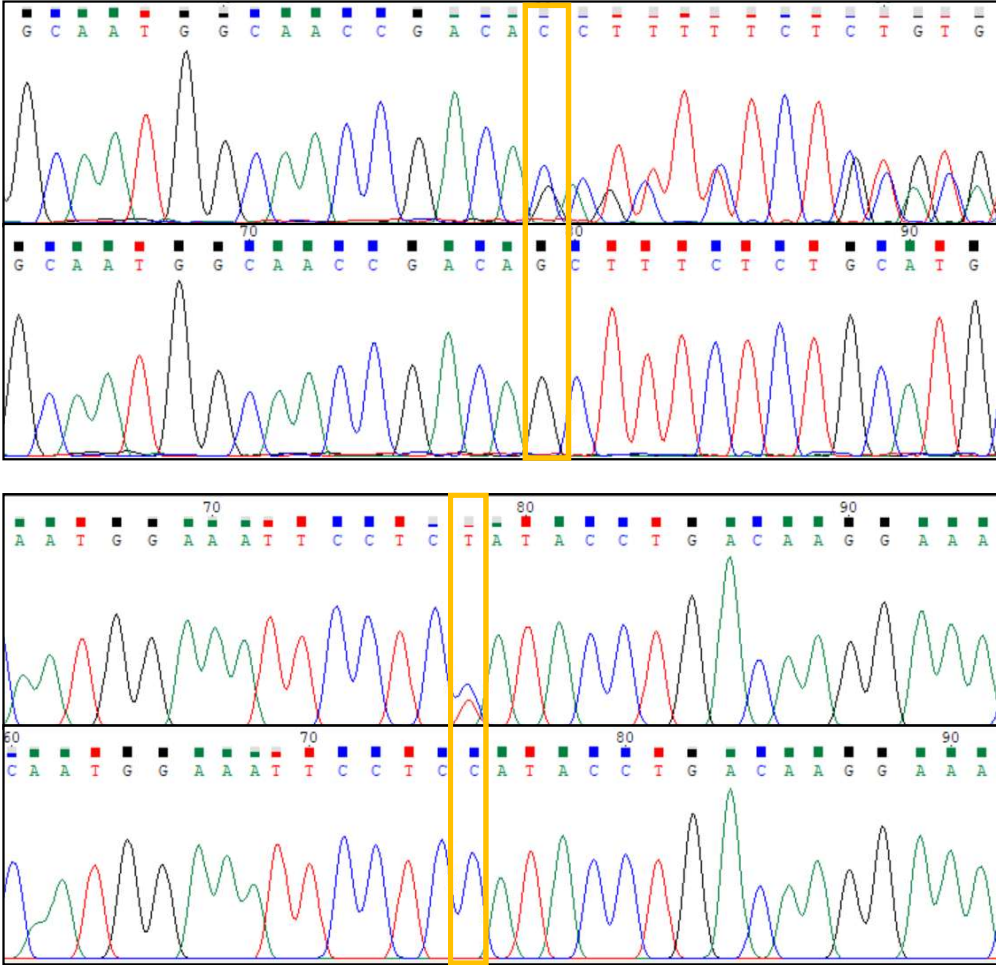
**Allele 1: c.3210\_3211dup**  
 AGAAAGCTGTCGGTTG  
**Allele2: c.4672G>A (C>T in rev)**  
 GGTATGGAGGAATTTCCAT

STGD90 allele 1

WT

STGD90 allele 2

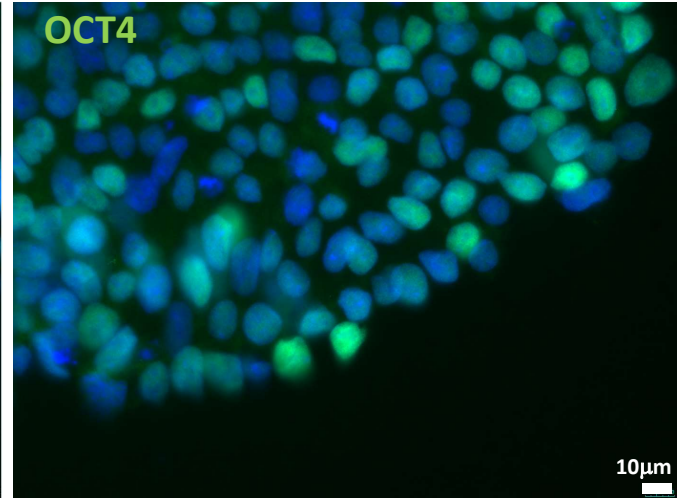
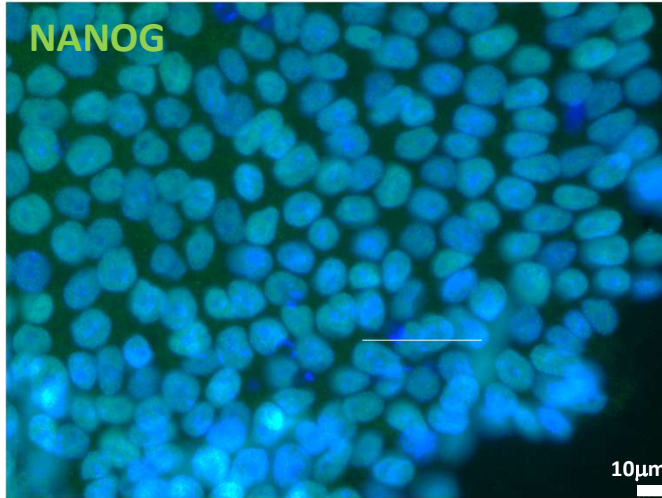
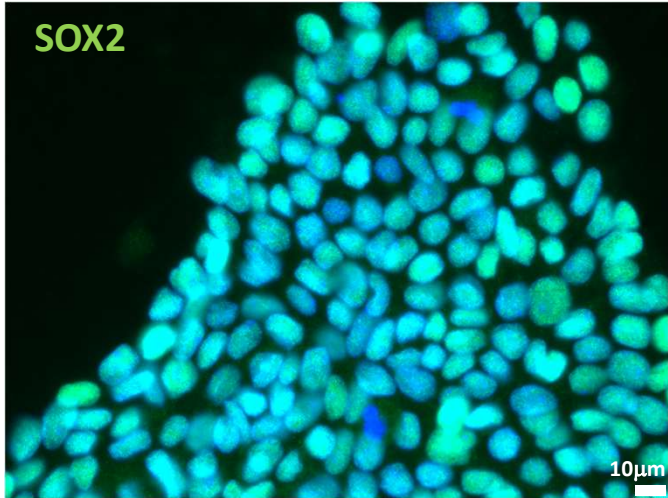
WT



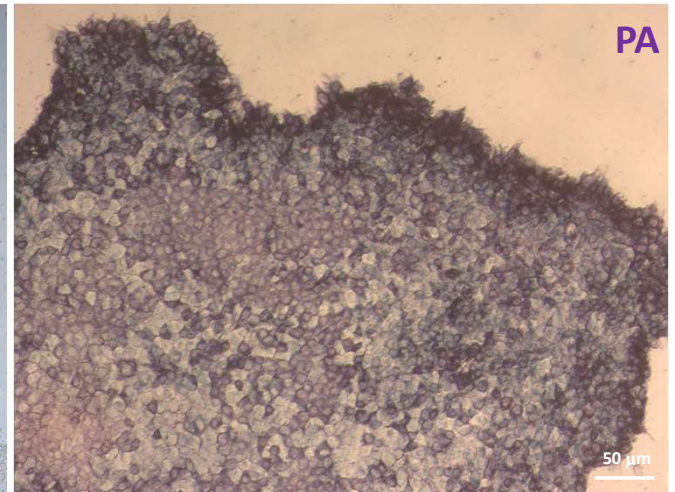
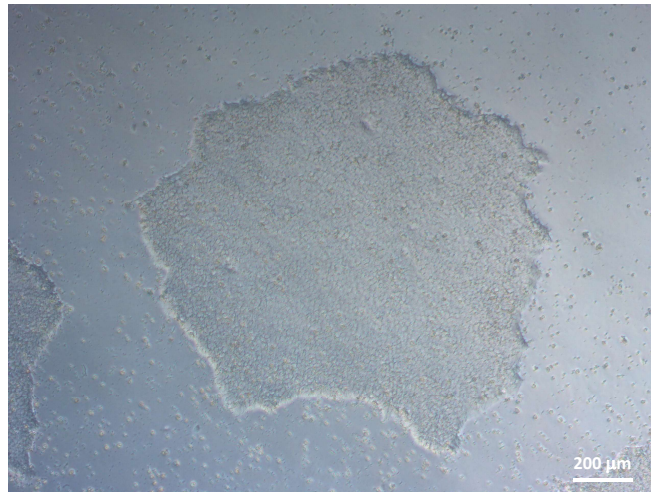
# Fingerprinting STGD90

Sample	D8S1179	D21S11	D7S820	CSP1PO	D3S1358	TH01	D13S317	D16S539	D2S1338	D19S433	vWA
STGD90	10, 15	29, 32.2	8, 12	11, 12	13, 14	6	8, 14	11	17, 24	14	17, 19
blood-stgd90	10, 15	29, 32.2	8, 12	11, 12	13, 14	6	8, 14	11	17, 24	14	17, 19

STG90 c10 p8



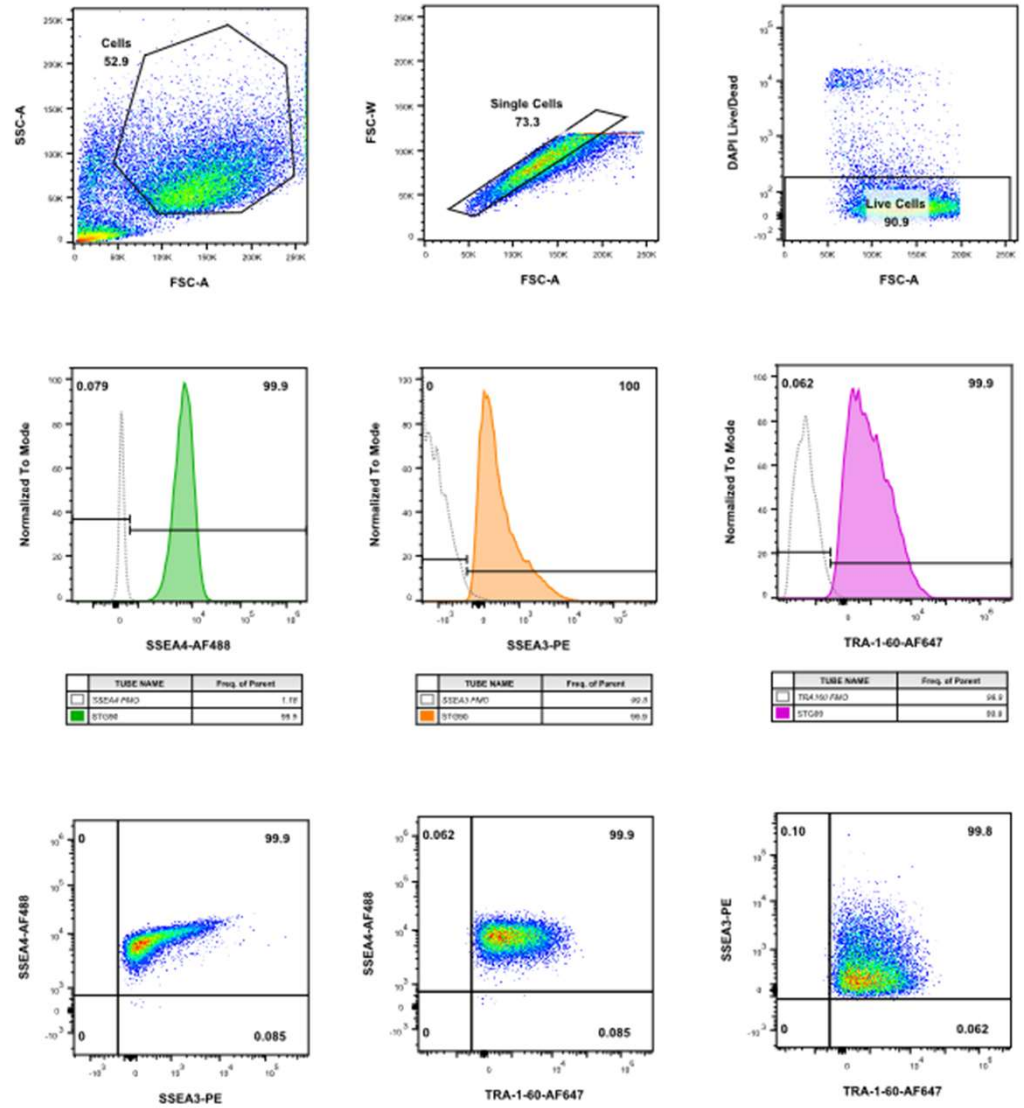
STG90 c10 p11



Annex 3

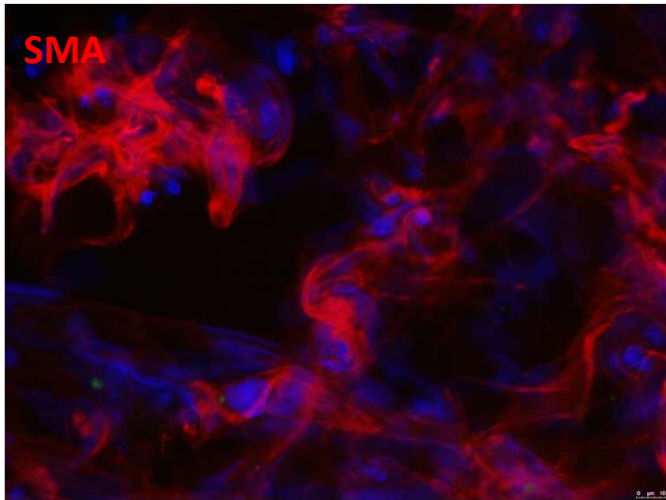
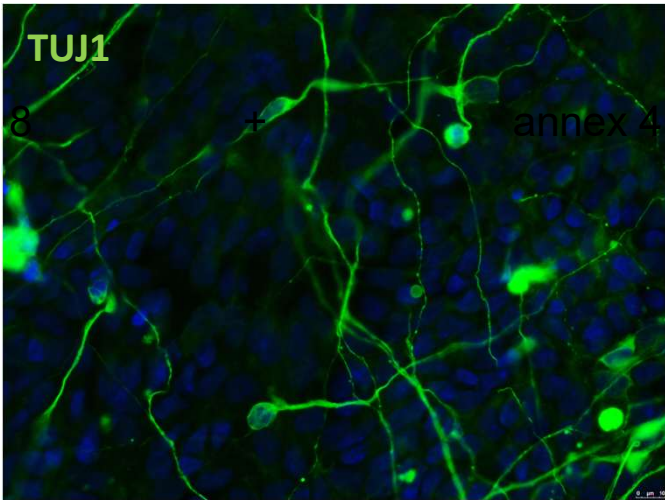
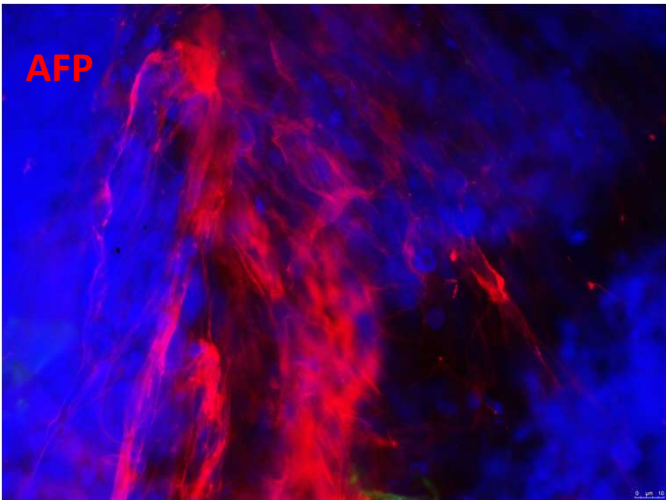
# STG90

SSEA4, SSEA 3 and TRA-1-60 >99%



Annex 4

# STG90 c10 p9 3 germ layer differentiated in vitro



Annex 5

# Karyotype STGD90 c10 p13

Código de Biobanco: INVN02524A329CRMA000

Código de origen: STG90 c10 p13

Petición de servicio: S2400020

Fecha de entrada:

Tipo de muestra:

Técnica: Bandas G

04/04/24

iPSC

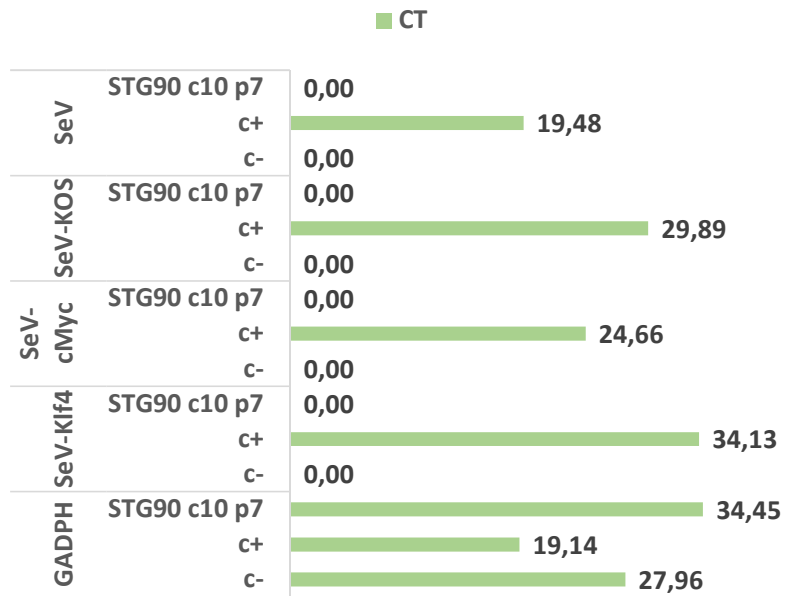
## RESULTADOS ANÁLISIS CITOGÉNICO



Cariotipo: 46,XX

Diagnóstico citogenético: Línea celular compatible con cariotipo femenino normal.

# Stg90 c10 p7 SeV clearance



# SeV micoplasma control

## STGD90-MiPS4F10 p14

Positive control	blue
Negative control	violet
sample	violet

MycoGenie Rapid Mycoplasma Detection Kit

Code: MORV0011

tests Code: MORV0011-50